

Cardiovascular and Interventional Radiological Society of Europe

GEST 2017

E U R O P E

**Global Embolization
Symposium and Technologies**

POCKET GUIDE

**May 31 – June 03
Florence | Italy**

www.gest2017.eu



CIRSE foundation

Get your GEST Europe programme via the CIRSE Society App!

Make the most of your time at GEST Europe 2017:

- browse the programme
- build your personal schedule
- complete the paperless session evaluation
- participate in e-voting
- send questions to the moderators
- find your way around using the interactive floor plan
- browse the exhibition
- and much more...



Available for iOS and Android



2	2 Important Addresses 3 Committees 4 General Information 8 Hands-on Workshops	
12	Wednesday – Scientific Programme	WED
19	Thursday – Scientific Programme	THU
27	Friday – Scientific Programme	FRI
34	Saturday – Scientific Programme	SAT
37	Corporate Activities 39 Satellite Symposia 45 Learning Centre 47 Sponsors Hands-on Workshops	
49	Exhibitors and Sponsors 49 Technical Exhibition, Alphabetical List 51 Technical Exhibition, Numerical List 54 Technical Exhibitors Guide	

Important Addresses

Congress Venue

Firenze Fiera Congress and Exhibition Centre

Palazzo dei Congressi

Piazza Adua 1

50123 Florence | Italy

Organising Secretariat

CIRSE Central Office

Neutorgasse 9

1010 Vienna | AUSTRIA

Phone: + 43 1 904 2003

Fax: + 43 1 904 2003 30

Email: office@esir.org

www.gest2017.eu

Committees

Advisory Board

Anna-Maria Belli (UK)

Elias Brountzos (GR)

Jafar Golzarian (US)

Ziv J. Haskal (US)

Marc R. Sapoval (FR)

Scientific Programme Committee

Anna Maria Belli (UK)

Christoph A. Binkert (CH)

Michael D. Darcy (US)

Fabrizio Fanelli (IT)

Jafar Golzarian (US)

Ziv J. Haskal (US)

Robert A. Morgan (UK)

Charles E. Ray, Jr. (US)

Marc R. Sapoval (FR)

Daniel Y. Sze (US)

General Information from A to Z

App

Let the CIRSE app take care of your congress planning. Newcomers, please download the CIRSE society app which is available for iPhone, iPad and Android (www.cirse.org/app) and install the GEST Europe 2017 event. If the CIRSE society app is already on your smartphone, please just install the GEST Europe 2017 event and have the best toolkit to plan your personal congress programme, evaluate sessions, browse the exhibition, take part in votings and submit questions to the moderator in selected sessions.



Badges

Your personalised badge is your admission card to the congress. For organisational and security reasons, badges have to be worn at the congress venue at all times. A lanyard will be given to you with the congress bag. Identity checks in the congress centre may occur at any time. In case of loss, a replacement badge will be provided for an administrative charge of €80.

Certificate of Attendance

To obtain your certificate of attendance, you can choose one of the following options:

Print your certificate onsite at the congress

From 10:00 on Friday, June 2, you can use one of the dedicated workstations at the information desk within the exhibition area. All you need is your congress badge.

Print your certificate at home

After the congress you will be able to print your certificate of attendance at www.gest2017.eu. All you will need is your last name and badge number. Alternatively, you could log into your personal CIRSE account at www.cirse.org with your personal log-in details.

CME Credit Allowance

The CIRSE Foundation is accredited by the European Accreditation Council for Continuing Medical Education (EACCME) to

provide the following CME activity for medical specialists. The EACCME is an institution of the European Union of Medical Specialists (UEMS), www.uems.net.

The GEST Europe 2017 is designated for up to 21 hours of European external CME credits. Each medical specialist should claim only those hours of credit that he/she actually spent in the educational activity.

Through an agreement between the European Union of Medical Specialists and the American Medical Association, physicians may convert EACCME credits to an equivalent number of AMA PRA Category 1 Credits™. Information on the process to convert EACCME credit to AMA credit can be found at www.ama-assn.org/go/internationalcme.

Live educational activities, occurring outside of Canada, recognised by the UEMS-EACCME for ECMEC credits are deemed to be Accredited Group Learning Activities (Section 1) as defined by the Maintenance of Certification Program of The Royal College of Physicians and Surgeons of Canada.

Coffee & Snacks

Refreshments can be purchased at the cash bars within the exhibition area.

Opening Hours

Wednesday, May 31	08:00-18:00
Thursday, June 1	08:00-18:00
Friday, June 2	08:00-18:00
Saturday, June 3	08:00-12:00

Disclaimer

CIRSE cannot accept any liability for the acts of the suppliers to this meeting or the attendees' safety while travelling to or from the congress. All participants are strongly advised to carry adequate travel and health insurance, as CIRSE cannot accept liability for accidents or injuries that may occur.

Disclosures

For financial disclosures and conflict of interest statements please refer to www.gest2017.eu.

ESIRonline – www.esir.org

ESIRonline is the largest online presentation database for interventional radiology, featuring slides and webcasts from CIRSE meetings. With a large section covering embolisation topics, ESIRonline is the ideal tool for your research and educational needs. Presentations recorded at GEST Europe 2017 will be integrated shortly after the meeting. Access to congress-related content is available to all CIRSE members and GEST Europe 2017 registered participants.

Evaluation

To complete the session evaluation and obtain credits for your attendance at GEST Europe 2017 sessions please use the online evaluation system, accessible through the mobile app (please see page 4) and at <https://eval.ctimeeting.com/gest2017>.



Internet

A free wireless service is available to all delegates throughout the congress centre.

Network: GEST2017

Password: gest2017

Mobile Phones

Please do not forget to turn your mobile phone to silent mode during the sessions.

Recording and Photographs

Please note that any form of recording, filming or photographing of presentation material during the sessions is strictly forbidden. Subject to the authors' consent, all presentation material will be made available online on CIRSE's educational platform ESIRonline.

Registration Desk – Opening Hours

Tuesday, May 30	16:00-18:00
Wednesday, May 31	07:00-18:00
Thursday, June 1	07:30-18:00
Friday, June 2	07:30-18:00
Saturday, June 3	07:30-11:00

Smoking

GEST Europe is a non-smoking congress. Smoking is permitted outside the congress centre only.

Speaker Centre

The Speaker Centre is located on the first floor of the congress centre. Please note that only digital material will be allowed for oral presentations. All material must be in English and provided on a USB flash drive or external hard-disk to be placed on the central server onsite. All presentation files must be uploaded at least 3 hours prior to the beginning of the corresponding session.

Computers connected to the local server allowing access to the speakers' presentations are available in every lecture room. These computers are equipped with Microsoft Windows 7 Professional and Microsoft Office 2013 Professional. Please note that speakers are not allowed to use their own laptops for their presentations.

Opening Hours

Tuesday, May 30	16:00-18:00
Wednesday, May 31	07:00-18:00
Thursday, June 1	07:30-18:00
Friday, June 2	07:30-18:00
Saturday, June 3	07:30-11:30

Sponsors and Exhibitors

Please find a floor plan of the exhibition on the inside of the cover and a detailed list of all exhibitors and sponsors on pages 49-51.

Opening Hours

Wednesday, May 31	09:30-17:30
Thursday, June 1	09:30-17:30
Friday, June 2	09:30-17:30
Saturday, June 3	09:30-12:00

Tourist Information and Hospitality Desk

For information regarding restaurants and excursions, please visit the desk of our official travel partner, Kuoni, located at the information desk within the exhibition area. Kuoni will be pleased to help you with all matters related to your stay in Florence.

Hands-on Workshops

*Coordinators: C.A. Binkert (Winterthur/CH),
C.E. Ray, Jr. (Chicago, IL/US)*

Embolisation procedures require not only clinical knowledge but also a thorough technical understanding of how each embolic agent works and how they are correctly delivered. The hands-on workshops focus on the technical part of embolisation and provide the opportunity for participants to practice under the guidance of expert interventionalists. The goal is not only to learn the standard delivery but also to emphasise how to deal with difficult situations and how to avoid complications with each embolic agent. Every hands-on workshop deals with a specific embolic agent to allow participants to expand their skills.

Pre-registration for all hands-on workshops was necessary. Should you not have pre-registered, please arrive at the workshop room well in advance to check availability.

Location: Hands-on Workshop Room

Coils and plugs

*Moderators: C.A. Binkert (Winterthur/CH),
B.S. Funaki (Chicago, IL/US), C.E. Ray, Jr. (Chicago, IL/US)*

*Instructors: J.F. Angle (Charlottesville, VA/US),
B. Arslan (Chicago, IL/US), J.F. Benenati (Miami, FL/US),
E. Brountzos (Athens/GR), G. Carrafiello (Milan/IT),
M.D. Darcy (St. Louis, MO/US), R.C. Gaba (Chicago, IL/US),
Z.J. Haskal (Charlottesville, VA/US), R.J. Lewandowski (Chicago, IL/US),
G. Maleux (Leuven/BE), I. McCafferty (Birmingham/UK),
C.E. Ray, Jr. (Chicago, IL/US), J.B. Spies (Washington, DC/US),
O.M. van Delden (Amsterdam/NL)*

Learning Objectives:

- To understand the indications and contraindications for the use of coils and plugs for embolotherapy
- To become familiar with the characteristics of repositionable coils and plugs to best tailor the devices for use in various clinical situations
- To become familiar with the requirements of catheters and pushers to deliver various coils and plugs
- To learn how to deal with difficulties during coil/plug deployment

Wednesday, May 31

HoW 1: 14:00-15:00

HoW 2: 15:30-16:30

HoW 3: 17:00-18:00

Liquid embolics

*Moderators: C.A. Binkert (Winterthur/CH),
M.D. Darcy (St. Louis, MO/US)*

*Instructors: Y. Arai (Tokyo/JP), C.A. Binkert (Winterthur/CH),
M. Grosso (Cuneo/IT), R. Loffroy (Dijon/FR),
L. Machan (Vancouver/CA), V. Vidal (Marseille/FR),*

Learning Objectives:

- To understand the clinical indications and contraindications for the use of liquid embolics
- To become familiar with the specific techniques for most commonly used liquid agents
- To learn how to avoid complications with liquid agents
- To understand the differences in sclerosant and nonsclerosant liquid embolics and when to use which class of device

Thursday, June 1

HoW 4: 14:00-15:00

HoW 5: 15:30-16:30

HoW 6: 17:00-18:00

Particles and gelfoam

*Moderators: J.F. Angle (Charlottesville, VA/US),
C.E. Ray, Jr. (Chicago, IL/US)*

*Instructors: K. Ahrar (Houston, TX/US), S. Bhatia (Davie, FL/US),
G. Carrafiello (Milan/IT), B.S. Funaki (Chicago, IL/US),
N. Hacking (Southampton/UK), P.N.M. Lohle (Tilburg/NL),
C.E. Ray, Jr. (Chicago, IL/US), D.Y. Sze (Stanford, CA/US)*

Learning Objectives:

- To become familiar with the clinical indications for the use of particles and coils for embolotherapy
- To understand the importance of particle size for their clinical use
- To understand the role of gelfoam as a temporary embolic agent
- To become familiar with different ways of using gelfoam depending on the clinical situation

Friday, June 2

HoW 7: 14:00-15:00

HoW 8: 15:30-16:30

Wednesday, May 31

08:00-09:45
101 Plenary Session
Coils and Plugs
 Main Auditorium

*Moderators: A.-M. Belli (London/UK),
 J. Golzarian (Minneapolis, MN/US)*

- 101.1 Catheter choice for delivery of plugs and coils
O.M. van Delden (Amsterdam/NL)
- 101.2 Techniques for coil deployment
G. Maleux (Leuven/BE)
- 101.3 When to stop: endpoints for mechanical embolisation
K. Osuga (Osaka/JP)
- 101.4 Technical differences between coils: density, fibres and hydrogel
D. Vorwerk (Ingolstadt/DE)
- 101.5 Plugs and microplugs: update
M.A. Ruffino (Turin/IT)
- 101.6 Coils, plugs or both: when and why
B. Arslan (Chicago, IL/US)
- 101.7 Complications using coils and plugs: how to avoid and how to solve!
O.M. van Delden (Amsterdam/NL)
- 101.8 Debate – Detachable coils: pro
J.-P. Pelage (Caen/FR)
- 101.9 Debate – Detachable coils: con
M.S. Johnson (Indianapolis, IN/US)
- 101.10 Advanced clinical cases
J.F. Benenati (Miami, FL/US)
- 101.11 Advanced clinical cases
D. Vorwerk (Ingolstadt/DE)

Discussion

WED

10:15-12:00

201 Parallel Session

Trauma

Sala Verde

*Moderators: B.S. Funaki (Chicago, IL/US),
P.L. Pereira (Heilbronn/DE)*

- 201.1 Management algorithms for trauma
M.D. Darcy (St. Louis, MO/US)
- 201.2 Splenic embolisation: proximal vs. distal embolisation
R. Uberoi (Oxford/UK)
- 201.3 Hepatic trauma embolisation: how to minimise complications
M. Cariati (Milan/IT)
- 201.4 Blunt and penetrating renal trauma: when and how to embolise
P.P. Goffette (Brussels/BE)
- 201.5 Embolisation of pelvic trauma: technique and outcomes
M.S. Hamady (London/UK)
- 201.6 Endovascular management for iatrogenic non-visceral injuries
R. Uberoi (Oxford/UK)
- 201.7 Endovascular management of extremity trauma
M. Cariati (Milan/IT)
- 201.8 Endovascular management of aortic trauma
H. Rousseau (Toulouse/FR)
- 201.9 Endovascular management of head and neck trauma
L. Defreyne (Ghent/BE)
- 201.10 Debate – Empiric embolisation for pelvic trauma: safe and indicated
O.M. van Delden (Amsterdam/NL)
- 201.11 Debate – Empiric embolisation for pelvic trauma: increases complications
W.E. Saad (Ann Arbor, MI/US)

Discussion

10:15-12:00

202 Parallel Session**HCC**

Main Auditorium

*Moderators: Y. Arai (Tokyo/JP),
C.E. Ray, Jr. (Chicago, IL/US)*

- 202.1 Patient assessment before IR treatment
R. Lencioni (Miami, FL/US)
- 202.2 Basics of radioembolisation dosimetry
T.F. Jakobs (Munich/DE)
- 202.3 Results of conventional TACE
G. Mauri (San Donato Milanese/IT)
- 202.4 Results of drug-eluting TACE
K. Malagari (Athens/GR)
- 202.5 HCC with portal vein occlusion TARE or TACE
R.J. Lewandowski (Chicago, IL/US)
- 202.6 Radiation segmentectomy and/or lobectomy
R.J. Lewandowski (Chicago, IL/US)
- 202.7 Matching therapy to patient
M. Grosso (Cuneo/IT)
- 202.8 Downstaging and bridging to transplantation
C.E. Ray, Jr. (Chicago, IL/US)
- 202.9 Debate – Is there a role for embolisation pre
TARE: pro
K. Ahrar (Houston, TX/US)
- 202.10 Debate – Is there a role for embolisation pre
TARE: con
P.L. Pereira (Heilbronn/DE)
- 202.11 Alternative chemotherapeutic agents for TACE
Y. Arai (Tokyo/JP)
- 202.12 Anti-reflux or flow arrest for TACE
S. Miyayama (Fukui/JP)

Discussion

12:15-13:00

SY 301 Satellite Symposium

For the detailed programme
please refer to page 39.

13:00-13:45

SY 302 Satellite Symposium

For the detailed programme
please refer to page 39.

14:00-15:00

**HoW 1 Hands-on Workshop
Coils and plugs**

HoW Room

For the detailed programme
please refer to pages 8-11.

14:15-15:45

**401 Parallel Session
Imaging**

Main Auditorium

*Moderators: N. McEniff (Dublin/IE),
O. Pellerin (Paris/FR)*

- 401.1 New guidance tool for liver embolisation
B.C. Meyer (Hannover/DE)
- 401.2 Practical aspects of live image guidance during
embolisation procedures
H. Kobeiter (Créteil/FR)
- 401.3 CBCT in liver embolisation: optimising parameters
D.Y. Sze (Stanford, CA/US)
- 401.4 Use of advanced planning & guidance software
for complex liver tumour embolisation
R. Lencioni (Miami, FL/US)

- 401.5 Role of US in the angio suite for defining the right target for TACE/TAE
F. Orsi (Milan/IT)
- 401.6 Fusion imaging: how to use it to optimise embolisation
B.C. Meyer (Hannover/DE)
- 401.7 Can CBCT flow and perfusion provide endpoints for tumour embolisation
O. Pellerin (Paris/FR)
- 401.8 CBCT: how much is the radiation load to the patient
H. Kobeiter (Créteil/FR)

Discussion

14:15-15:15

402 Clinical Case-Based Discussion
Radioembolisation dose calculation, mapping and follow-up
Sala Verde

- 402.1 *G. Maleux (Leuven/BE)*
- 402.2 *M. Grosso (Cuneo/IT)*

15:15-16:15

403 Clinical Case-Based Discussion
Embolisation of bronchial and pulmonary artery
Sala Verde

- 403.1 *R. Loffroy (Dijon/FR)*
- 403.2 *J. Pollak (New Haven, CT/US)*

15:30-16:30
HoW 2 Hands-on Workshop
Coils and plugs
 HoW Room

For the detailed programme
 please refer to pages 8-11.

16:15-17:45
501 Parallel Session
GU embolisation
 Main Auditorium

*Moderators: L. Machan (Vancouver/CA),
 V. Vidal (Marseille/FR)*

- 501.1 Varicocele embolisation: technique
P. Haage (Wuppertal/DE)
- 501.2 Varicocele embolisation and fertility: results
L. Machan (Vancouver/CA)
- 501.3 Embolisation of angiomyolipomas: technique
 and outcomes
L.B. Lönn (Copenhagen/DK)
- 501.4 Embolisation in polycystic kidney disease for
 volume reduction
F. Petitpierre (Bordeaux/FR)
- 501.5 Embolisation in non-functioning renal allografts
 in patients with graft intolerance syndrome (GIS)
F. Petitpierre (Bordeaux/FR)
- 501.6 Embolisation in priapism
N. McEniff (Dublin/IE)
- 501.7 Embolotherapy of haematuria of non-renal origin
L.B. Lönn (Copenhagen/DK)
- 501.8 PAE for prostate cancer: early experience
T. Bilhim (Lisbon/PT)
- 501.9 Non-vascular embolisation for urological
 problems
Y. Arai (Tokyo/JP)

Discussion

16:15-17:15

502 Clinical Case-Based Discussion
Management of complex HCC
 Sala Verde

- 502.1 *K. Malagari (Athens/GR)*
 502.2 *F. Orsi (Milan/IT)*

17:00-18:00

HoW 3 Hands-on Workshop
Coils and plugs
 HoW Room

For the detailed programme
 please refer to pages 8-11.

18:00-18:30

SY 601 Satellite Symposium

For the detailed programme
 please refer to page 39.

Thursday, June 1

08:00-09:45

701 **Parallel Session**

Liquid embolic agents

Main Auditorium

*Moderators: I. McCafferty (Birmingham/UK),
D.Y. Sze (Stanford, CA/US)*

- 701.1 Principles and comparison of liquid agents
S. Comelli (Turin/IT)
- 701.2 Glue: preparations and formulations
Y. Arai (Tokyo/JP)
- 701.3 Onyx vs. Squid vs. Phil
R. Loffroy (Dijon/FR)
- 701.4 Sclerosing agents and foam: agent selection
and technical tips
M. Grosso (Cuneo/IT)
- 701.5 Tips and tricks for non-sclerosing liquid agents
L. Defreyne (Ghent/BE)
- 701.6 Tips and tricks for sclerosing liquid agents
D.Y. Sze (Stanford, CA/US)
- 701.7 Ethiodised oils (Lipiodol): more than an embolic
transporter
S. Miyayama (Fukui/JP)
- 701.8 When to stop: endpoints and how to avoid
complications
F. Fanelli (Rome/IT)
- 701.9 Debate – If I could only have one, I would use glue
V. Vidal (Marseille/FR)
- 701.10 Debate – If I could only have one, I would use
EVOH-based agents
L. Defreyne (Ghent/BE)
- 701.11 Advanced clinical cases
Y. Arai (Tokyo/JP)
- 701.12 Advanced clinical cases
D. Savio (Turin/IT)

Discussion

08:00-09:45

702 Parallel Session
Fibroid embolisation
 Sala Verde

*Moderators: S.J. Park (Incheon/KR),
 J.B. Spies (Washington, DC/US)*

- 702.1 New developments in the medical management of fibroids
P.N.M. Lohle (Tilburg/NL)
- 702.2 Embolic agents for UAE: systematic review
R. Das (London/UK)
- 702.3 Embolisation specific endpoints for different agents
J.B. Spies (Washington, DC/US)
- 702.4 Embolisation of non-uterine collaterals
P.N.M. Lohle (Tilburg/NL)
- 702.5 Guidelines of fibroid embolisation: international perspective
M. Sone (Tokyo/JP)
- 702.6 UFE and fertility update
J.-P. Pelage (Caen/FR)
- 702.7 Clinical role of IR in UFE
A.-M. Belli (London/UK)
- 702.8 Peri-procedural pain reduction: blocks, epidurals, sedation and alternative medicine
C.A. Binkert (Winterthur/CH)
- 702.9 Complications: how to minimise and manage
T.J. Kroencke (Augsburg/DE)
- 702.10 Advanced clinical cases
F. Orsi (Milan/IT)
- 702.11 Advanced clinical cases
R. Das (London/UK)

Discussion

10:15-12:00

801 Parallel Session

Vascular and lymphatic malformations

Sala Verde

*Moderators: Y.-S. Do (Seoul/KR),
J.A. Reekers (Amsterdam/NL)*

- 801.1 Vascular malformations: diagnosis and classification
W.A. Wohlgemuth (Regensburg/DE)
- 801.2 Which agents to use in malformations: low flow
P. Rowlands (Liverpool/UK)
- 801.3 Sclerotherapy technique, outcome and complications: low flow
M.-F. Giroux (Montreal/CA)
- 801.4 Which agents to use in malformations: high flow
J.A. Reekers (Amsterdam/NL)
- 801.5 Technique, outcome and complications: high flow
P. Rowlands (Liverpool/UK)
- 801.6 AVMs: embolising the arterialised veins
Y.-S. Do (Seoul/KR)
- 801.7 Advances in the use of dilute alcohol in AVMs
Y.-S. Do (Seoul/KR)
- 801.8 Management of renal AVMs
M.-F. Giroux (Montreal/CA)
- 801.9 Clinical and imaging follow-up after treatment
P. Haage (Wuppertal/DE)
- 801.10 Debate – High flow AVMs should be treated from a venous approach: pro
I. McCafferty (Birmingham/UK)
- 801.11 Debate – High flow AVMs should be treated from a venous approach: con
J.A. Reekers (Amsterdam/NL)
- 801.12 Advanced clinical cases
W.E. Saad (Ann Arbor, MI/US)
- 801.13 Advanced clinical cases
P. Rowlands (Liverpool/UK)

Discussion

10:15-12:00

802 Parallel Session
GI haemorrhage
 Main Auditorium

*Moderators: C.A. Binkert (Winterthur/CH),
 R. Uberoi (Oxford/UK)*

- 802.1 Management algorithms for upper and lower GI haemorrhage
R. Uberoi (Oxford/UK)
- 802.2 Optimisation of angiographic technique and provocative manoeuvres
B.S. Funaki (Chicago, IL/US)
- 802.3 Safety and efficacy of embolisation for upper GI haemorrhage
P.P. Goffette (Brussels/BE)
- 802.4 Embolisation technique: how distal
G. Carrafiello (Milan/IT)
- 802.5 Safety and efficacy of embolisation for lower GI haemorrhage
R.C. Gaba (Chicago, IL/US)
- 802.6 Is there a role for empiric embolisation in the upper and lower GI tract?
N. McEniff (Dublin/IE)
- 802.7 Embolisation and stent grafts for post GI surgery bleeding
M.R. Sapoval (Paris/FR)
- 802.8 Technique and results of embolisation in haemorrhoids
V. Vidal (Marseille/FR)
- 802.9 Debate – Is there a role for liquid embolic agents: pro
F. Fanelli (Rome/IT)
- 802.10 Debate – Is there a role for liquid embolic agents: con
B.S. Funaki (Chicago, IL/US)

Discussion

12:15-13:00

SY 901 Satellite Symposium

For the detailed programme
please refer to page 41.

13:00-13:45

SY 902 Satellite Symposium

For the detailed programme
please refer to page 43.

14:00-15:00

**HoW 4 Hands-on Workshop
Liquid embolics**

HoW Room

For the detailed programme
please refer to pages 8-11.

14:15-15:45

**1001 Parallel Session
Chest**

Main Auditorium

*Moderators: P. Haage (Wuppertal/DE),
J. Pollak (New Haven, CT/US)*

- 1001.1 Clinical and imaging workup for haemoptysis
G. Carrafiello (Milan/IT)
- 1001.2 Arterial anatomy and variants for haemoptysis
J. Pollak (New Haven, CT/US)
- 1001.3 Bronchial artery embolisation: long-term outcome
and management of recurrence
R. Niola (Naples/IT)
- 1001.4 Bronchial artery embolisation: how to avoid
complications
M.-F. Carette (Paris/FR)

- 1001.5 Debate – Liquids should replace particles in bronchial artery embolisation: pro
R. Loffroy (Dijon/FR)
- 1001.6 Debate – Liquids should replace particles in bronchial artery embolisation: con
T. Tanaka (Kashihara/JP)
- 1001.7 Pulmonary AVM: choice of materials and technical tips
J. Pollak (New Haven, CT/US)
- 1001.8 Endovascular management of pulmonary artery pseudoaneurysms
M.-F. Carette (Paris/FR)
- 1001.9 Intranodal lymphangiography and thoracic duct embolisation: technical TIPS
R.C. Gaba (Chicago, IL/US)
- 1001.10 Results of thoracic duct embolisation
R.C. Gaba (Chicago, IL/US)

Discussion

14:15-15:15

1002 Clinical Case-Based Discussion
Management of complex visceral aneurysms
Sala Verde

- 1002.1 *M. Szczerbo-Trojanowska (Lublin/PL)*
- 1002.2 *M.S. Hamady (London/UK)*

15:15-16:15

1003 Clinical Case-Based Discussion
Varicoceles and pelvic congestion
Sala Verde

- 1003.1 *T. Jargielło (Lublin/PL)*
- 1003.2 *L. Machan (Vancouver/CA)*

15:30-16:30
HoW 5 Hands-on Workshop
Liquid embolics
 HoW Room

For the detailed programme
 please refer to pages 8-11.

16:15-17:45
1101 Parallel Session
Abdominal embolisation
 Main Auditorium

*Moderators: K. Ahrar (Houston, TX/US),
 K.A. Hausegger (Klagenfurt/AT)*

- 1101.1 Embolisation/ablation of benign liver lesions
K. Ahrar (Houston, TX/US)
- 1101.2 Embolisation for hypersplenism and
 thrombocytopaenia
M. Szczerbo-Trojanowska (Lublin/PL)
- 1101.3 Gastric artery embolisation: update of results and
 future directions
A. Arepally (Atlanta, GA/US)
- 1101.4 Transarterial therapy for pancreatic cancer
T. Tanaka (Kashihara/JP)
- 1101.5 Bleeding post-pancreatic transplant
J.F. Angle (Charlottesville, VA/US)
- 1101.6 Durable means to occlude the bile duct
E. Brountzos (Athens/GR)
- 1101.7 Embolisation for retroperitoneal and spontaneous
 abdominal wall haemorrhage
A. Krajina (Hradec Králové/CZ)
- 1101.8 Interventional management of haemobilia
K.A. Hausegger (Klagenfurt/AT)
- 1101.9 Management of GI fistulae
Z.J. Haskal (Charlottesville, VA/US)

Discussion

16:15-17:15

1102 Clinical Case-Based Discussion
Management of complex AVM
Sala Verde

1102.1 *I. McCafferty (Birmingham/UK)*

1102.2 *W.A. Wohlgemuth (Regensburg/DE)*

17:00-18:00

HoW 6 Hands-on Workshop
Liquid embolics
HoW Room

For the detailed programme
please refer to pages 8-11.

18:00-18:30

SY 1201 Satellite Symposium

For the detailed programme
please refer to page 43.

THU

Friday, June 2

08:00-09:45

1301 Parallel Session
Particles and gelfoam
 Main Auditorium

*Moderators: H.T. Abada (Abu Dhabi/AE),
 K. Osuga (Suita, Osaka/JP)*

- 1301.1 Particles and gelfoam: indications and choice of agents
D. Vorwerk (Ingolstadt/DE)
- 1301.2 Microparticles: what do we need to know
K. Osuga (Osaka/JP)
- 1301.3 When to stop: endpoints for particulate embolisation
R. Niola (Naples/IT)
- 1301.4 5 top tips and tricks using gelfoam
M. Sone (Tokyo/JP)
- 1301.5 5 top tips and tricks using particles
J.B. Spies (Washington, DC/US)
- 1301.6 Drug-eluting particles: characteristics
K. Malagari (Athens/GR)
- 1301.7 Complications using particles and gelfoam: how to avoid and how to solve!
H.T. Abada (Abu Dhabi/AE)
- 1301.8 Particles for embolisation: new development and future
J. Golzarian (Minneapolis, MN/US)
- 1301.9 Debate – Resorbable particles will replace non-resorbable particles: pro
A. Arepally (Atlanta, GA/US)
- 1301.10 Debate – Resorbable particles will replace non-resorbable particles: con
T.J. Kroencke (Augsburg/DE)
- 1301.11 Advanced clinical cases
K. Osuga (Suita, Osaka/JP)
- 1301.12 Advanced clinical cases
H. Kobeiter (Créteil/FR)

Discussion

08:00-09:45

1302 Parallel Session**Portal hypertension and portal venous embolisation**

Sala Verde

*Moderators: Z.J. Haskal (Charlottesville, VA/US),
G. Maleux (Leuven/BE)*

- 1302.1 Indications for RTO and/or TIPS
G. Maleux (Leuven/BE)
- 1302.2 Classic BRTO: anatomy and results
B. Arslan (Chicago, IL/US)
- 1302.3 PARTO: technique and results
D.I. Gwon (Seoul/KR)
- 1302.4 BRTO variants: ATOs and ARTOs
H. Kiyosue (Yufu/JP)
- 1302.5 Treatment of ectopic varices
R.C. Gaba (Chicago, IL/US)
- 1302.6 Transsplenic approaches to variceal embolisation
W.E. Saad (Ann Arbor, MI/US)
- 1302.7 Debate – Embolisation of portal venous varices during TIPS: pro
A. Krajina (Hradec Králové/CZ)
- 1302.8 Debate – Embolisation of portal venous varices during TIPS: con
H. Rousseau (Toulouse/FR)
- 1302.9 Splenic artery embolisation in patients with portal hypertension
S. Bhatia (Davie, FL/US)
- 1302.10 Principles and indications for portal venous embolisation
E. Brountzos (Athens/GR)
- 1302.11 Transarterial radioembolisation as an alternative to portal vein embolisation
R.J. Lewandowski (Chicago, IL/US)
- 1302.12 Advanced clinical cases
A.M. Ierardi (Varese/IT)
- 1302.13 Advanced clinical cases
D.I. Gwon (Seoul/KR)

Discussion

10:15-12:00

1401 Parallel Session**Prostate artery embolisation**

Main Auditorium

*Moderators: F.C. Carnevale (São Paulo/BR),
M.R. Sapoval (Paris/FR)*

- 1401.1 Current medical and surgical therapy: advantages and disadvantages
R. Das (London/UK)
- 1401.2 Patient evaluation and workup
N. Hacking (Southampton/UK)
- 1401.3 Prostate artery anatomy
T. Bilhim (Lisbon/PT)
- 1401.4 Step-by-step guide through PAE
F.C. Carnevale (São Paulo/BR)
- 1401.5 Optimising CBCT during PAE
M.R. Sapoval (Paris/FR)
- 1401.6 Selection of embolic agents for PAE
J. Golzarian (Minneapolis, MN/US)
- 1401.7 Clinical management and complications after PAE
N. Hacking (Southampton/UK)
- 1401.8 Debate – PAE is ready for wide-spread clinical adoption: pro
T. Bilhim (Lisbon/PT)
- 1401.9 Debate – PAE is ready for wide-spread clinical adoption: con
J.B. Spies (Washington, DC/US)
- 1401.10 Meta-analysis and systematic review of results of PAE
Z.J. Haskal (Charlottesville, VA/US)
- 1401.11 PAE - future directions
M.R. Sapoval (Paris/FR)

Discussion

10:15-12:00

1402 Parallel Session
Endoleaks
 Sala Verde

*Moderators: F. Fanelli (Rome/IT),
 M. Hamady (London/UK)*

- 1402.1 Definitions, frequency and natural history of endoleaks
J.F. Benenati (Miami, FL/US)
- 1402.2 Is there a role for prophylactic embolisation to prevent endoleaks?
M.D. Dake (Stanford, CA/US)
- 1402.3 Cone-beam CT for direct sac embolisation
O. Pellerin (Paris/FR)
- 1402.4 Embolisation techniques for type 1
R.A. Morgan (London/UK)
- 1402.5 Embolisation techniques for type 2
A. Chavan (Oldenburg/DE)
- 1402.6 Transcaval approach: a valid technique for type 2?
J.F. Angle (Charlottesville, VA/US)
- 1402.7 Embolisation in TEVAR
M.D. Dake (Stanford, CA/US)
- 1402.8 Imaging follow-up after embolisation
R. Iezzi (Rome/IT)
- 1402.9 Complications and outcomes
A. Chavan (Oldenburg/DE)
- 1402.10 Advanced clinical cases
R.A. Morgan (London/UK)
- 1402.11 Advanced clinical cases
R. Iezzi (Rome/IT)

Discussion

12:15-13:00
SY 1501 Satellite Symposium

For the detailed programme
 please refer to page 45.

13:00-13:45
SY 1502 Satellite Symposium

For the detailed programme
 please refer to page 45.

14:00-15:00
HoW 7 Hands-on Workshop
Particles and gelfoam
 HoW Room

For the detailed programme
 please refer to pages 8-11.

14:15-15:45
1601 Parallel Session
Visceral aneurysms
 Main Auditorium

*Moderators: J.F. Benenati (Miami, FL/US),
 R.A. Morgan (London/UK)*

- 1601.1 Epidemiology and treatment indications
K.A. Hausegger (Klagenfurt/AT)
- 1601.2 Hepatic and splenic artery aneurysms:
 embolisation techniques
J. Golzarian (Minneapolis, MN/US)
- 1601.3 Hepatic and splenic artery aneurysms: outcomes
 and complications
A.M. Ierardi (Varese/IT)

- 1601.4 Renal artery aneurysms: technique and outcomes
M. Szczerbo-Trojanowska (Lublin/PL)
- 1601.5 Management of pseudoaneurysm secondary to pancreatitis
M.-F. Giroux (Montreal/CA)
- 1601.6 Coeliac and SMA aneurysm: technique and outcomes
M.S. Hamady (London/UK)
- 1601.7 Imaging follow-up
R.A. Morgan (London/UK)
- 1601.8 Debate – Keeping the parent artery open: pro
A.M. Ierardi (Varese/IT)
- 1601.9 Debate – Keeping the parent artery open: con
J.F. Benenati (Miami, FL/US)

Discussion

14:15-15:15

1602 Clinical Case-Based Discussion
Complex UFE
Sala Verde

- 1602.1 *M. Sone (Tokyo/JP)*
- 1602.2 *T. Bilhim (Lisbon/PT)*

15:15-16:15

1603 Clinical Case-Based Discussion
Prostate artery anatomy
Sala Verde

- 1603.1 *S. Bhatia (Davie, FL/US)*
- 1603.2 *F.C. Carnevale (São Paulo/BR)*

15:30-16:30

HoW 8 Hands-on Workshop
Particles and gelfoam
HoW Room

For the detailed programme
please refer to pages 8-11.

16:15-17:45

1701 Parallel Session**Women's health**

Main Auditorium

*Moderators: R. Niola (Naples/IT),
J.-P. Pelage (Caen/FR)*

- 1701.1 IR techniques in the management of morbidly adherent placenta
L.B. Lönn (Copenhagen/DK)
- 1701.2 Debate – Prophylactic embolisation before delivery: pro
F. Giurazza (Rome/IT)
- 1701.3 Debate – Prophylactic embolisation before delivery: con
A.-M. Belli (London/UK)
- 1701.4 PPH: when and how
J.-P. Pelage (Caen/FR)
- 1701.5 Complications of embolisation for PPH
T.J. Kroencke (Augsburg/DE)
- 1701.6 Embolisation of uterine AVMs
F. Giurazza (Rome/IT)
- 1701.7 Embolisation technique and results for adenomyosis
N. Hacking (Southampton/UK)
- 1701.8 Embolisation technique in pelvic congestion syndrome
T. Jargiełło (Lublin/PL)
- 1701.9 Management of perineal varicosities
A. Lopez (Guildford/UK)

Discussion

16:15-17:15

1702 Clinical Case-Based Discussion**Solid organ trauma**

Sala Verde

- 1702.1 *H.T. Abada (Abu Dhabi/AE)*
- 1702.2 *J.F. Angle (Charlottesville, VA/US)*

Saturday, June 3

08:00-09:45

1901 **Morbidity and Mortality**



Main Auditorium

*Coordinators: F. Fanelli (Rome/IT),
M.R. Sapoval (Paris/FR)*

Panellists:

- 1901.1 *M.D. Darcy (St. Louis, MO/US)*
- 1901.2 *T. de Baère (Villejuif/FR)*
- 1901.3 *L. Defreyne (Ghent/BE)*
- 1901.4 *O.M. van Delden (Amsterdam/NL)*
- 1901.5 *G. Maleux (Leuven/BE)*
- 1901.6 *R. Uberoi (Oxford/UK)*
- 1901.7 *Y. Arai (Tokyo/JP)*
- 1901.8 *J. Golzarian (Minneapolis, MN/US)*

10:15-12:00

2001 **Parallel Session**

Embolisation of liver metastatic cancer and cholangiocarcinoma

Sala Verde

*Moderators: A. Denys (Lausanne/CH),
R. Lencioni (Miami, FL/US)*

- 2001.1 When should embolisation be considered for colorectal liver mets?
A. Denys (Lausanne/CH)
- 2001.2 Irinotecan eluting particles for colorectal metastases: is there a role?
T.F. Jakobs (Munich/DE)
- 2001.3 Radioembolisation for colorectal carcinoma: results
M.S. Johnson (Indianapolis, IN/US)
- 2001.4 Lipiodol TACE for colorectal metastases: is there a role?
R. Lencioni (Miami, FL/US)
- 2001.5 Managing peri-procedural systemic therapy: whether to stop or continue in colorectal patients
G. Mauri (San Donato Milanese/IT)
- 2001.6 SIRFLOX trial: impact on treatment algorithm
A. Denys (Lausanne/CH)
- 2001.7 When should embolisation be considered for neuroendocrine tumours
T. de Baère (Villejuif/FR)

- 2001.8 Chemoembolisation and bland embolisation for neuroendocrine tumours
K. Ahrar (Houston, TX/US)
- 2001.9 TARE for neuroendocrine tumours
T.F. Jakobs (Munich/DE)
- 2001.10 When should embolisation be considered for cholangiocarcinoma
C.E. Ray, Jr. (Chicago, IL/US)
- 2001.11 Embolisation for cholangiocarcinoma: techniques and results
R. Lencioni (Miami, FL/US)
- 2001.12 Breast metastases to the liver
P.L. Pereira (Heilbronn/DE)

Discussion

10:15-12:00

2002 Parallel Session
Vanguard embolisations
Main Auditorium

*Moderators: M.D. Darcy (St. Louis, MO/US),
T. Bilhim (Lisbon/PT)*

- 2002.1 Thermal ablation of vascular malformations
M.D. Darcy (St. Louis, MO/US)
- 2002.2 Gastric embolisation for weight loss
A. Arepally (Atlanta, GA/US)
- 2002.3 Embolisation of musculoskeletal pathology
Y. Okuno (Tokyo/JP)
- 2002.4 Embolisation of haemarthrosis
M.D. Darcy (St. Louis, MO/US)
- 2002.5 Embolisation for chronic haemorrhage from haemorrhoids
V. Vidal (Marseille/FR)
- 2002.6 Lymphangiographic approaches to lymphoceles
M. Itkin (Philadelphia, PA/US)
- 2002.7 The next phase in lymphatic interventions
M. Itkin (Philadelphia, PA/US)
- 2002.8 Thyroid embolisation for multi-goitre disease
O. Pellerin (Paris/FR)

Discussion

September 16-20
Copenhagen, Denmark
CIRSE 2017

featuring

IDEAS

Interdisciplinary
Endovascular
Aortic Symposium

**Reduced
Registration
Fees
Available**

www.cirse.org

Cardiovascular and Interventional Radiological Society of Europe



GEST 2017



E U R O P E

Global Embolization Symposium and Technologies

CORPORATE ACTIVITIES & EXHIBITION

Satellite Symposia
and Learning Centre
Hands-on Workshop Sponsors
Exhibitors and Sponsors

YOUR PARTNER FOR EMBOLIZATION SOLUTIONS

MVP™

Micro Vascular Plug System
For vessels from 1.5 to 9 mm

Onyx™

Liquid Embolic System



Concerto™

Detachable Coil System



LEARN MORE ABOUT OUR EMBOLIZATION SOLUTIONS WITH THE MEDTRONIC MEETING APP

1. Scan the QR codes below or go to
<http://medtronicmeetings.quickmobile.mobi/>



iOS / Apple



Android

2. Open the App and scan the code with the scan function in the App



or press on event ID and enter the event key
(case-sensitive):
MGEST17

Wednesday, May 31

12:15-13:00

- SY 301 Siemens Healthineers**
syngo DynaCT guided embolisation – from routine use to new frontiers
Main Auditorium

Moderator: F. Carnevale (São Paulo/BR)

- 301.1 Liver and beyond: optimising radiopaque beads embolisation with syngo DynaCT
T. F. Jakobs (Munich/DE)
- 301.2 syngo DynaCT imaging and guidance for PAE: an essential tool
N. Hacking (Southampton/UK)

13:00-13:45

- SY 302 Medtronic**
How to treat AVM/pulmonary AVM and visceral aneurysms
Main Auditorium

Moderator: J. Golzarian (Minneapolis, MN/US)

- 302.1 How to treat AVMs
F. Numan (Istanbul/TR)
- 302.2 Treatment of pulmonary AVM in HHT patient
J. Golzarian (Minneapolis, MN/US)
- 302.3 Treatment of visceral aneurysms
M. Wojtaszek (Canterbury/UK)

18:00-18:30

- SY 601 Merit Medical**
Prostate artery embolisation: transradial approach and challenging access troubleshooting
Sala Verde

Moderator: F. Carnevale (São Paulo/BR)

- 601.1 Overcoming difficult access in PAE: SwiftNINJA® steerable microcatheter
M.R. Sapoval (Paris/FR)
- 601.2 Transradial directed PAE: the next step
S. Bhatia (Davie, FL/US)

SIR-Spheres Y-90 resin microspheres in HCC

SARAH – Landmark study in HCC generating Level 1 evidence¹

SIR-Spheres Y-90 resin microspheres:

The proven choice with better Quality of Survival for patients with inoperable HCC compared to sorafenib¹

Key findings¹:

- No significant difference in overall survival
- Significantly better tolerated treatment
- Significantly reduced the frequency and severity of side effects
- Significantly better Quality of Life

SIR-Spheres Y-90 microspheres are approved for use in Argentina, Australia, Brazil, Canada, the European Union (CE Mark), Switzerland, Turkey, and several countries in Asia for the treatment of unresectable liver tumours. In the US, SIR-Spheres Y-90 resin microspheres have a Pre-Market Approval (PMA) from the FDA and are indicated for the treatment of unresectable metastatic liver tumors from primary colorectal cancer with adjuvant intra-hepatic artery chemotherapy (IHAC) of FUDR (Fluoruridine).

Reference:

1. Vilgrain V et al. *J of Hepatology* 2017; **66** (Suppl. 1): Abs. GS-012

SIR-Spheres® is a registered trademark of Sirtex SIR-Spheres Pty Ltd

Sirtex Medical United Kingdom Ltd
Building 3, Chiswick Park, 566 Chiswick High Road,
London W4 5YA, United Kingdom
www.sirtex.com

SIR-Spheres®
Y-90 resin microspheres
Focusing on Quality of Survival in HCC

Thursday, June 1

12:15-13:00

SY 901 Sirtex Medical Europe GmbH
SIR-Spheres® Y-90 resin microspheres –
a case review session in the light of new
clinical evidence

Main Auditorium

*Moderators: R. Golfieri (Bologna/IT),
N.P. Tait (London/UK)*

Welcome and introduction

- 901.1 HCC case study presentation: SIR-Spheres Y-90 resin microspheres as an alternative to sorafenib
I. Bargellini (Pisa/IT)
- 901.2 mCRC case study presentation: SIR-Spheres Y-90 resin microspheres and surgery – a promising combination
C. Benckert (Berlin/DE)
- 901.3 mNET case study presentation: Confirmed safety and efficacy of SIR-Spheres Y-90 resin microspheres in mNET
A.J.A.T. Braat (Utrecht/NL)

Discussion and closing remarks

An anatomical illustration of a blood vessel, likely a hepatic artery, branching into smaller vessels. The vessel is filled with microspheres. The left side of the image shows blue microspheres, while the right side shows white microspheres. The background is a dark, textured surface representing liver tissue.

Boston
Scientific

Advancing science for life™

SIZED FOR SUCCESS

**Embozene™ is sized
for **embolisation** success.**

For a predictable, consistent embolisation, Embozene™ Microspheres provide a broad range of coloured, precisely calibrated microspheres in prefilled syringes that enable controlled delivery and reduce potential catheter occlusion.

All cited trademarks are the property of their respective owners. CAUTION: The law restricts these devices to sale by or on the order of a physician. Indications, contraindications, warnings and instructions for use can be found in the product labeling supplied with each device. Information for the use only in countries with applicable health authority product registrations. Material not intended for use in France.

10-450209-AB-JAN 2017 © 2017 Boston Scientific Corporation or its affiliates. All rights reserved.

13:00-13:45

SY 902 Guerbet

Targeted treatments of HCC, lymphatic leakage & vascular anomalies

Main Auditorium

Moderator: M.R. Sapoval (Paris/FR)

- 902.1 cTACE fundamental & mechanism of action
J. Golzarian (Minneapolis, MN/US)
- 902.2 New perspectives for HCC treatment: cTACE in combination with interventional therapies
M. Guimaraes (Charleston, SC/US)
- 902.3 Treating lymphatic disorders: technical considerations and clinical outcomes
G. Maleux (Leuven/BE)

18:00-18:30

SY 1201 Boston Scientific

Interventional solutions to pelvic problems

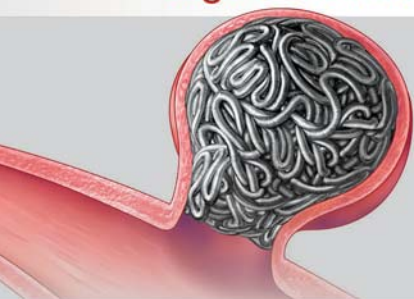
Sala Verde

Moderator: V. Vidal (Marseille/FR)

- 1201.1 Evolving the treatment of hemorrhoids
V. Vidal (Marseille/FR)
- 1201.2 Adenomyosis: from awareness to patient benefit
P.N.M. Lohle (Tilburg/NL)
- 1201.3 Rope UK: treating BPH and building the guidelines
N. Hacking (Southampton/UK)

Penumbra EMBOLISATION SYSTEM

Large Volume Coils for
High-Flow Microcatheter

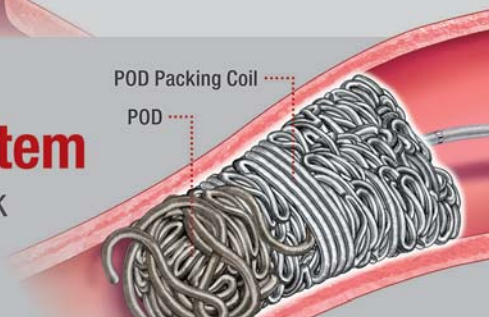


Ruby Coil

Frame & Fill

POD System

Anchor & Pack



POD Packing Coil

POD



2.6 F

LANTERN

Microcatheter

Visit Penumbra at GEST booth 4

Penumbra



www.penumbrainc.com

Product availability varies by country. Prior to use, please refer to the Instructions for Use for the Ruby Coil System, POD System, and Penumbra Delivery Microcatheters for complete product indications, contraindications, warnings, precautions, potential adverse events and detailed instructions for use. Please contact your local Penumbra representative for more information.

Copyright ©2017 Penumbra, Inc. All rights reserved. The Penumbra P logo, Ruby, POD, and LANTERN are registered trademarks or trademarks of Penumbra, Inc. in the USA and other countries. 11945, Rev. A 04/17 OUS

Friday, June 2

12:15-13:00

SY 1501 Cook Medical

Main Auditorium

- 1501.1 Anatomical considerations for emborrhoid treatment: what is new?
V. Vidal (Marseille/FR)
- 1501.2 Pelvic vein embolisation – why coil design is important.
P. Diwakar (London/UK)

13:00-13:45

SY 1502 Penumbra

Changing the paradigm of treatment in peripheral embolisation and thrombectomy

Main Auditorium

Moderator: J.F. Benenati (Miami, FL/US)

- 1502.1 Ruby, POD and POD packing coil: advancing peripheral embolisation procedures
I. McCafferty (Birmingham/UK)
- 1502.2 Endovascular treatment for venous and arterial thrombosis with the Indigo System
J.F. Benenati (Miami, FL/US)

Learning Centre

Terumo

The Learning Centre is located on the Ground Floor.

Please note that the CIRSE Foundation is not responsible for the information provided at Satellite Symposia and the Learning Centre.

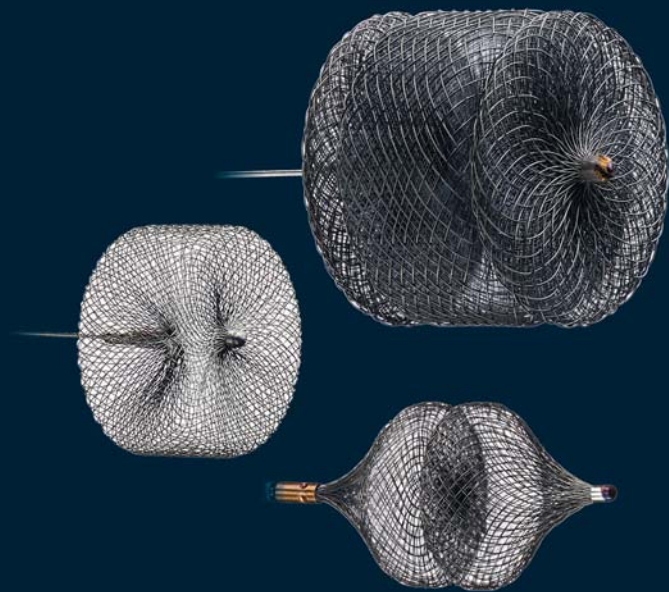
ST. JUDE MEDICAL IS NOW ABBOTT.

ADVANCING THE STANDARD OF CARE

in peripheral embolization.

AMPLATZERTM

Family of Vascular Plugs



All products herein are trademarks of the Abbott Group of Companies. Photo(s) on file at Abbott Vascular. All drawings are artist's representations only and should not be considered as an engineering drawing or photograph. Products intended for use by or under the direction of a physician. Prior to use, reference the Instructions for Use provided inside the product carton (when available) or at eifu.abbottvascular.com for more detailed information on Indications, Contra-indications, Warnings, Precautions and Adverse Events. Information contained herein is for distribution for Europe, Middle East and Africa ONLY. Please check the regulatory status of the device before distribution in areas where CE marking is not the regulation in force. For more information, visit our website at abbottvascular.com

© 2017 Abbott. All rights reserved. EM-EVT-0217-0270



Sponsors Hands-on Workshops

The hands-on workshops are kindly supported by:

- **Abbott**
- **Boston Scientific**
- **BTG**
- **Cook Medical**
- **GEM Srl**
- **Medtronic**
- **Merit Medical**
- **Penumbra**
- **Terumo Europe**

For detailed information on the hands-on workshops, please refer to pages 8-11.

For further information about the industry partners, please refer to the Technical Exhibitors Guide.

If you are interested in obtaining product information outside of the hands-on workshop sessions, please visit the respective company booth in the exhibition area.

Detach with precision.

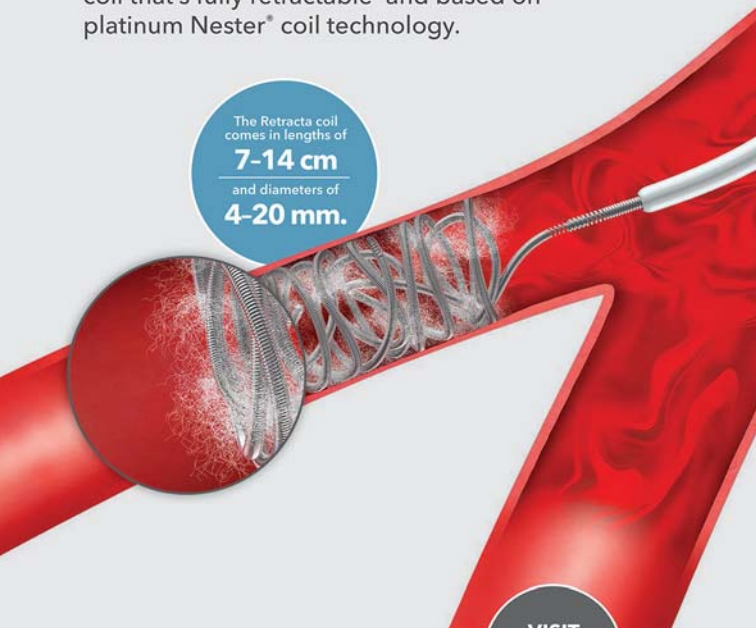
The Retracta® coil is a detachable .035 inch coil that's fully retractable* and based on platinum Nester® coil technology.

The Retracta coil comes in lengths of

7-14 cm

and diameters of

4-20 mm.



Retracta®

DETACHABLE EMBOLIZATION COIL

VISIT
THE COOK
BOOTH

To learn more about the **Retracta coil**, contact your Cook Medical sales representative or visit cookmedical.eu/retracta/animate.

*The Retracta coil is fully retractable only until it is detached from the delivery wire.



cookmedical.eu

Technical Exhibition (Alphabetical List)

Company	Booth No.
Abbott	7a
ALN Implants Chirurgicaux	10
ArtVentive Medical Group	9
Boston Scientific	15
BTG	13
Cook Medical	5
Endovascular Today Europe	17
GEM	6
GEST 2018 U.S.	8
GUERBET	12
Interventional News / BIBA	18
Medtronic	2
Mentice	16
Merit Medical	14
Penumbra	4
Sirtex Medical Europe	7
Surefire Medical	1
Terumo	11
Toshiba Medical Systems Europe	3



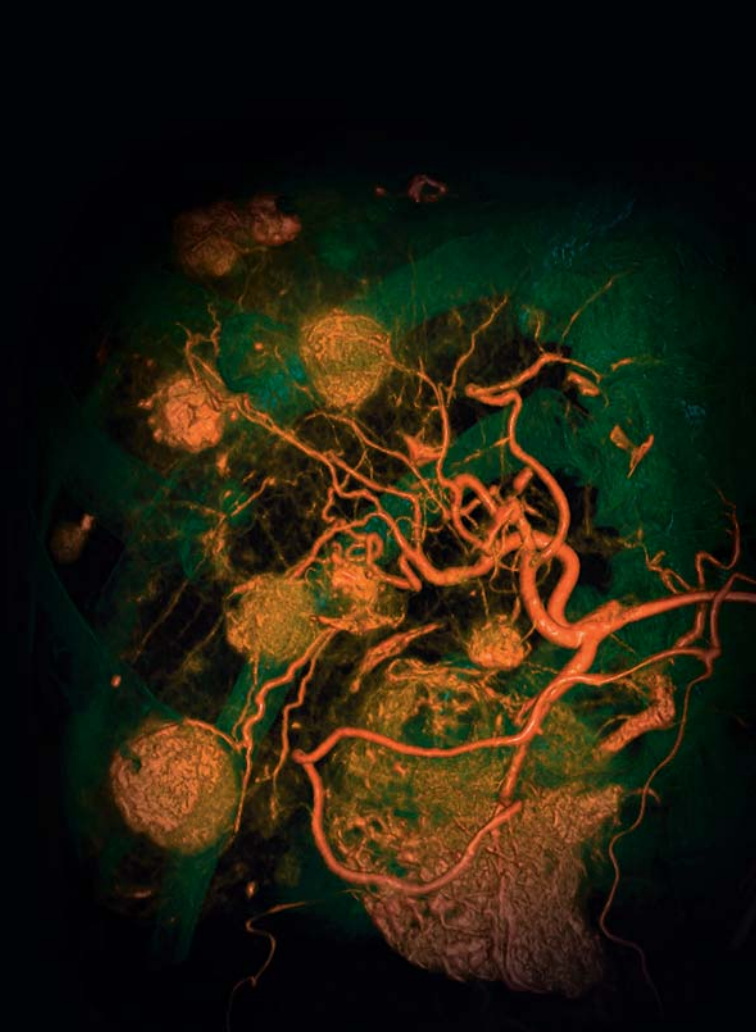
Vascular Solutions – Now Part of Teleflex

With the acquisition of Vascular Solutions, Teleflex strengthens its presence within the coronary and peripheral vascular market. We unite with a shared value and vision to improve the health and quality of people's lives worldwide. Together, we continue our relentless pursuit of identifying unmet clinical needs and offer a growing portfolio of innovative, specialty-focused solutions to support interventionalists around the globe.

For more information visit: teleflex.com

Technical Exhibition (Numerical List)

Company	Booth No.
Surefire Medical	1
Medtronic	2
Toshiba Medical Systems Europe	3
Penumbra	4
Cook Medical	5
GEM	6
Sirtex Medical Europe	7
Abbott	7a
GEST 2018 U.S.	8
ArtVentive Medical Group	9
ALN Implants Chirurgicaux	10
Terumo	11
GUERBET	12
BTG	13
Merit Medical	14
Boston Scientific	15
Mentice	16
Endovascular Today Europe	17
Interventional News / BIBA	18



Moderator: Prof. Francisco Carnevale, MD
Hospital Sírio-Libanês, Sao Paolo, Brazil

.....

Liver and beyond: Optimizing radiopaque beads embolization with syngo DynaCT.

Tobias F. Jakobs, MD
The Hospital of the Order of St. John of God,
Munich, Germany

**syngo DynaCT Imaging and Guidance for PAE:
An essential tool.**

Nigel Hacking, MD
Spire Southampton Hospital, Hampshire, UK

.....

We are looking forward to welcoming you at GEST 2017

Join the

Siemens Healthineers

symposium on

TACE and PAE.



syngo DynaCT
guided embolization –
from routine use
to new frontiers

Wednesday, May 31, 2017
12:15-13:00
Main Auditorium

Technical Exhibitors Guide

Abbott

7a

Park Lane, Culliganlaan 2B
1831 Diegem
Belgium
www.abbott.com

Abbott Vascular, a division of Abbott, is a global leader in cardiac and vascular care with market-leading products and an industry-leading pipeline. We are committed to advancing patient care by transforming the treatment of vascular disease through medical device innovations, investments in research and development, and physician training and education. We offer cutting-edge devices for coronary artery disease, peripheral vascular disease, carotid artery disease and structural heart disease.

ALN Implants Chirurgicaux

10

589 Chemin du Niel
83230 Bormes les Mimosas
France
Phone: +33 049 40 10501
Fax: +33 049 40 10901
E-mail: contact@aln2b.com
www.aln2b.com

With its ALN optional vena cava filter, ALN is one of the leaders in the field. The filter has been well known in Europe for the past 25 years and has also been a long-stay on the international markets. including the U.S.

Products: ALN Optional vena cava filter with Hook, ALN Optional vena cava filter without Hook, Retrieval systems of the ALN filter including the 2in1 device.

CE Mark and FDA approved in 2008, the filter is retrievable after 40 months up to 12 years.

ArtVentive Medical Group Inc.**9**

2766 Gateway Road
CA 92009 Carlsbad
United States of America
Phone: +31 622 667 469
Fax: +1 760 683 6242
E-mail: henkvanderlaak@artventivemedical.com
www.artventivemedical.com

ArtVentive Medical Group, Inc. is a US Corporation and has its corporate headquarters in Carlsbad, California, USA. ArtVentive is committed to providing interventional specialists with innovative solutions that improve clinical outcomes, address a wide variety of conditions, and reduce health care costs. With the EOS™ Plug family of devices, ArtVentive revolutionises embolisation procedures by delivering immediate, complete and permanent occlusion, while reducing procedure time, radiation exposure and costs. Furthermore, the procedure is simple and fast, with either minimal or no artefacts at follow-up.

You can find more information on our website at:
www.artventivemedical.com. Please visit us at booth #9.

Boston Scientific**15**

2 rue René Caudron, CS 30206
78961 St Quentin en Yvelines CEDEX
France
Phone: +33 13 930 9700
E-mail: ReceptionFrance@bsci.com
www.bostonscientific.eu

Boston Scientific transforms lives through innovative medical solutions that improve the health of patients around the world. As a global medical technology leader for more than 35 years, we advance science for life by providing a broad range of high performance solutions that address unmet patient needs and reduce the cost of healthcare. For more information, visit www.bostonscientific.eu and connect on Twitter (@bostonsci) and Facebook.

DC Bead LUMI™

The first* radiopaque drug-eluting bead

A NEW LEVEL OF CONTROL



VISION

See tumour coverage during and after LUMI-TACE



PRECISION

Enhanced determination of embolisation endpoint†



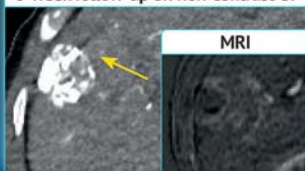
ASSURANCE

Confidence in treatment success

Single-shot fluoroscopy



6-week follow-up on non-contrast CT



Complete response of 4.6cm HCC following LUMI-TACE

SEE MORE

Hands-On-Workshop Particles and Gelfoam†

Friday, June 2 | Sala Onice

HoW 7: 14:00-15:00 | HoW 8: 15:30-16:30

† Participation is free of charge. Please register via your **GEST** account.

For full instructions for use, warnings and important safety information relating to DC Bead LUMI™ please visit www.dcbeadlumi.com/ifu. The images shown in this piece are based on clinical case experience with the BTG radiopaque bead product in the US. The US Food and Drug Administration on 14 December 2015 cleared this radiopaque embolic bead under the branded name "LC Bead LUMI™" for the treatment of hypervascular tumours and arteriovenous malformations. DC Bead LUMI™ has CE Mark approval as a radiopaque drug-eluting bead. In order to avoid confusion, BTG has replaced any references to LC Bead LUMI™ with DC Bead LUMI™, as it is the radiopaque nature of the product that is being demonstrated.

Reference: 1. Duran R et al. *Theranostics* 2016; 6(1): 28-38.

First refers to commercial availability.

Imagine where we can go.



DC Bead LUMI™ are manufactured by Biocompatibles UK Ltd, a BTG International group company. DC Bead and DC Bead LUMI are trademarks of Biocompatibles UK Ltd. DC Bead is a registered trademark in China, EU, Japan and Republic of Korea. 'Imagine where we can go', 'See More, Treat Smarter', BTG and the BTG roundel logo are trademarks of BTG International Ltd. BTG and the BTG roundel logo are registered trademarks in the US, EU and certain other territories. All rights reserved. © Copyright 2017 Biocompatibles UK Ltd. EM-LUM-2017-0113. EMEA. Date of preparation May 2017.

btg-im.com

**Biocompatibles UK Ltd,
a BTG International group company****13**

Lakeview, Riverside Way
Watchmoor Park, Camberley
GU15 3YL Surrey
United Kingdom
Phone: +44 1276 902 020
Fax: +44 1252 732 777
E-mail: hollie.munford@btgplc.com
www.btgplc.com

At BTG we are focused on bringing to market innovative products in specialist areas of medicine to better serve doctors and patients. Our growing portfolio of interventional medicine products is designed to advance the treatment of cancer, severe emphysema, severe blood clots and varicose veins, while our specialty pharmaceuticals portfolio offers antidotes that alleviate toxicity and treat rare conditions. Healthcare is constantly evolving – so BTG never stands still. Inspired by a deep understanding of our customers' needs, we're working to meaningfully improve the lives of patients and their healthcare experience. Our competitive advantage is our dedication to finding smart, often unconventional solutions to complex medical problems. Many of our products combine medicines, device technology and new techniques in order to deliver more targeted treatments. We also invest in clinical evidence to help demonstrate the value of our products to doctors, patients, and healthcare systems. Doing what's right for patients is what gets us to work in the morning; it's part of our DNA. By staying true to this principle and our values, we've earned a strong reputation for the quality of our products and our commitment to innovation.

Cook Medical**5**

O'Halloran Road, National Technology Park, Limerick
Ireland

Phone: +353 61 334440

Fax: +353 61 334441

www.cookmedical.eu

A global pioneer in medical breakthroughs, Cook Medical is committed to creating effective solutions that benefit millions of patients worldwide. Today, we combine medical devices, drugs, biologic grafts and cell therapies across more than 16,000 products serving more than 40 medical specialties. Founded in 1963 by a visionary who put patient needs and ethical business practices first, Cook is a family-owned company that has created more than 10,000 jobs worldwide. For more information, visit www.cookmedical.eu.

CIRSE – Cardiovascular and Interventional

Radiological Society of Europe

Neutorgasse 9

1010 Vienna, Austria

Tel.: +43 1 904 2003

Fax: +43 1 904 2003 30

E-mail: info@cirse.org

www.cirse.org

CIRSE is a non-profit scientific and educational society with over 7,000 members and 35 national group members. The society supports the development of all areas of image-guided medicine, through educational meetings, scientific publications, public awareness campaigns and collaboration with other medical or scientific organisations. CIRSE places a strong emphasis on embolisation, aiming to strengthen the increasingly vital role of embolotherapy in patient care. The CIRSE Foundation, an independent, non-profit and tax-exempt foundation that complements CIRSE's activities, both supports GEST Europe's biennial meetings and sponsors courses on the topic, which are organised by CIRSE's European School of Interventional Radiology (ESIR). In addition, CIRSE hosts ESIRonline, the largest online educational platform for interventional radiological procedures. Presentations and slides from GEST Europe 2017 will be available online soon. For more information, visit www.cirse.org, www.esir.org, www.gest2017.eu.

Endovascular Today Europe
17

1008 Upper Gulph Road, Suite 200
PA 19087 Wayne
United States of America
www.evtoday.com

Endovascular Today Europe is the premier publication for all specialists engaged in endovascular therapies. Published seven times a year with a weekly monthly online e-news, each issue of Endovascular Today Europe features timely articles on new techniques, clinical trial results, case studies, and advances in technology for endovascular practitioners. Endovascular Today Europe is distributed to 9,200 endovascular specialists in Europe

GEM Srl
6

Via dei Campi 2
55049 Viareggio
Italy
Phone: +39 0584 389784/391388
Fax: +39 0584 397904
E-mail: info@gemitaly.it
www.gemitaly.it

GEM srl is an Italian firm established in 1994 which produces and distributes synthetic surgical glues all over the world. These include: GLUBRAN 2 (Ref. G-NB-2; G-NB2-50; G-NB2S-25) for Surgical and Endovascular use; GLUBRAN TISS2 (Ref. G-NBOC2; G-NBOC2-35; G-NBOC-25) for skin application. GEM srl also produces and distributes the application devices suitable for the use of these glues : Dispensing Tips (Ref. G-DT) suitable for all the types of vials of glues; Catheters for Laparoscopy (Ref. G2-LPC; G2-LPC-RIG) for laparoscopic surgeries; Drop Control Devices (Ref. G2-DCD-210-8T) for open surgeries; Spray Devices in 5 models (Ref. G2-NBT; G2-NBT-SMALL; G2-NBT-RIG; G2-NBT-SHORT; G2-NBT-SM-SHORT) suitable for open, laparoscopic, thoracoscopic and bariatric surgeries. Application devices dedicated to the closure of vascular access, Glubran 2 Seal Device Ref. G2-SL 5/6; G2-SL 7/8 and 1 ml luer lock syringes Ref. G-LLS in polypropylene. All the above listed application devices are technically studied on purpose for GEM's glues. All GLUBRAN products are CE marked.

LIPIODOL® ULTRA FLUID

Ethyl ester of iodized fatty acids of poppy seed oil

Lipiodol® efficacy & safety for improved overall survival in HCC^{1,2,3,4}



LIPIODOL® ULTRA-FLUID. Composition: Ethyl esters of iodized fatty acids of poppy seed oil 10 mL, corresponding to an iodine content of 480 mg/mL. **Indications^(*):** In diagnostic radiology - Hysterosalpingography - Ascending urethrography - lymphography - Sialography - Fistulography and exploration of abscesses - Exploration of frontal sinuses - Pre and post-operative cholangiography. In interventional radiology - Visualisation and localization (by selective intra-arterial use during CT) of liver lesions in adults with known or suspected hepatocellular carcinoma - Visualisation, localisation and vectorisation during Trans-Arterial Chemo-Embolisation (TACE) of hepatocellular carcinoma at intermediate stage, in adults - Selective embolization in combination with Histoacryl glue (particularly for arteriovenous malformation or aneurysms) - Selective injections of LIPIODOL® ULTRA-FLUID into the hepatic artery for diagnostic purposes where a spiral CT scan is not practical. In endocrinology - Prevention of severe cases of iodine deficiency. **Posology and method of administration^(*):** have to be adapted according to the type of examination, the territories explored, the age and weight of the patient. The volume to be administered depends on the particular requirements of the technique and the size of the patient. **Contraindications:** Hypersensitivity to LIPIODOL® ULTRA-FLUID - Confirmed hyperthyroidism - Patients with traumatic injuries, recent haemorrhage or bleeding - Hysterosalpingography during pregnancy or acute pelvic inflammation - Bronchography. In interventional radiology (Trans-Arterial Chemo-Embolisation), Administration in liver areas with dilated bile ducts unless drainage has been performed. **Special warnings and special precautions for use^(*):** There is a risk of hypersensitivity regardless of the dose administered. Lymphography: Pulmonary embolism may occur immediately or after few hours to days from inadvertent systemic vascular injection or intravascular of LIPIODOL ULTRA-FLUID: Perform radiological monitoring during LIPIODOL® ULTRA-FLUID injection and avoid use in patients with severely impaired lung function, cardiorespiratory failure or right-sided cardiac overload. **Hypersensitivity:** all iodinated contrast agents can lead to minor or major hypersensitivity reactions, which can be life-threatening. These hypersensitivity reactions are of an allergic nature (known as anaphylactic reactions if they are serious) or a non-allergic nature. They can be immediate (occurring within 60 min) or delayed (not occurring until up to 7 days later). Anaphylactic reactions are immediate and can be fatal. They are dose-independent, can occur right from the first administration of the product, and are often unpredictable: avoid use in patients with a history of sensitivity to other iodinated contrast agents, bronchial asthma or allergic disorders because of an increased risk of a hypersensitivity reaction to LIPIODOL® ULTRA-FLUID. **Thyroid:** can cause hyperthyroidism in predisposed patients. Lymphography saturates the thyroid with iodine for several months and thyroid exploration should be performed before radiological examination. **Chemo-Embolization:** Trans-Arterial Chemo-Embolisation is not recommended in patients with decompensated liver cirrhosis (Child-Pugh ≥8), advanced liver dysfunction, macroscopic invasion and/or extra-hepatic spread of the tumour. Renal insufficiency must be prevented by correct rehydration before and after the procedure. Oesophageal varices must be carefully monitored. Hepatic intra-arterial treatment can progressively cause an irreversible liver insufficiency in patients with serious liver malfunction and/or undergoing close multiple sessions. The risk of superinfection in the treated area is normally prevented by administration of antibiotics. **Embolization with glue:** An early polymerisation reaction may exceptionally occur between LIPIODOL® ULTRA-FLUID and certain surgical glues, or even certain batches of glue. Before using new batches of LIPIODOL® ULTRA-FLUID or surgical glue, the compatibility of LIPIODOL® ULTRA-FLUID and the glue must be tested in vitro. **Interaction with other medicinal products and other forms of interaction^(*):** Metformin, Beta blockers, vasoactive substances, angiotensin-converting enzyme inhibitors, angiotensin-receptor antagonists, Diuretics, Interleukin 1. **Fertility, pregnancy and lactation^(*):** LIPIODOL® ULTRA-FLUID must only be used in pregnant women if absolutely necessary and under strict medical supervision. Breastfeeding should be discontinued if LIPIODOL® ULTRA-FLUID must be used - **Effects on ability to drive and use machines:** The effects on ability to drive and to use machines have not been investigated - **Undesirable effects^(*):** most adverse effects are dose-related and dosage should therefore be kept as low as possible: hypersensitivity, anaphylactic reaction, anaphylactoid reaction, vomiting, diarrhoea, nausea, fever, pain, dyspnea, cough, hypothyroidism, hyperthyroidism, thyroiditis, pulmonary embolism, cerebral embolism, retinal vein thrombosis, lymphoedema aggravation, hepatic vein thrombosis, granuloma. **Ove dose^(*):** The total dose of LIPIODOL® ULTRA-FLUID administered must not exceed 20 mL. **Pharmacodynamic properties^(*):** Pharmacotherapeutic group: X-ray contrast media, iodinated; ATC code: V08A D01. Water-insoluble iodinated contrast medium. **Presentation^(*):** 10 mL glass ampoule, box of 1 - 10 mL glass ampoule, box of 50. **Marketing authorization holder^(*):** Guerbet - BP 57400 - F-95943 Roissy CdG cedex - FRANCE. **Information:** tel : 33 (0) 1 45 91 50 00. **Revision:** September 2, 2015.

Materiale depositato presso AIFA in data XX/YY/2017. Per i paesi in cui il medicinale è autorizzato il materiale viene distribuito unitamente all'RCF. Il medicinale Lipiodol extra fluido non è registrato in Italia.

Indications and dosage may vary country to country.

Countries in which cTACE indication is registered: France, Japan, South Korea, Austria, Peru, Turkey, Hungary, Czech Republic, Mongolia, Argentina, The Netherlands, Vietnam, Thailand & Mexico.

For complete information please refer to country's local SPC.

For a copy of the SPC, please contact a member of Guerbet.

1. Ikeda M. et al., Prospective Study of Transcatheter Arterial Chemoembolization for Unresectable Hepatocellular Carcinoma: An Asian Cooperative Study between Japan and Korea J. Vasc. Interv. Radiol. 2013; 24: 490-500
2. Lo C.M. et al. Randomized Controlled Trial of Transarterial Lipiodol Chemoembolization for Unresectable Hepatocellular Carcinoma Hepatology 2002; 35: 1164-1171
3. Ijzert J.M. et al. arterial embolization or chemoembolization versus symptomatic treatment in patients with unresectable hepatocellular carcinoma: a randomised controlled trial The Lancet 2002; 359: 1734-1739
4. Ijzert J.M. et al. Systematic Review of Randomized Trials for Unresectable Hepatocellular Carcinoma: Chemoembolization Improves Survival Hepatology 2003; 37: 429-442
5. EASL/EORTC Clinical Practice Guidelines: Management of hepatocellular carcinoma. J. Hepatol. 2012; 56: 908-943
6. Japan Society of Hepatology, Recommendation, Chapter 5, Hepatology Research 2010; 40 (Suppl.1) 96-112
7. Bruix J. & Sherman M. AASLD Practice Guidelines; American Association for Study of the Liver Diseases; Hepatology 2011; 53: 1020-1022
8. Chinese guidelines 2011 edition, Chin. Clin. Oncol. 2012; 1:10

GEST 2018 U.S.

8

8333 NW 53rd Street, Suite 450
FL 33166 Doral
United States of America
E-mail: jnash@ccmcme.com
www.gestweb.org/symposium

The Global Embolization Symposium and Technologies
(GEST 2018 U.S.)

May 17-20, 2018 · Miami Beach, FL

Early Registration Discounts at www.gestweb.org/symposium

GUERBET

12

BP 57400
95943 Roissy CdG Cedex
France
Phone: +33 1 4591 5000
www.guerbet.com

Guerbet is a pioneer in the contrast agent field, with 90 years' experience, and is the only pharmaceutical group dedicated to medical imaging worldwide. It offers a comprehensive range of X-Ray, Magnetic Resonance Imaging (MRI) and Interventional Radiology and Theranostics (IRT) products, along with a range of injectors and related medical devices to improve the diagnosis and treatment of patients. To discover new products and ensure future growth, Guerbet invests heavily in R&D on which it spends around 9% of its sales each year. Guerbet (GBT) is listed on Euronext Paris (Segment B – Mid Caps) and generated €776 million in revenue in 2016. For more information about Guerbet, please visit www.guerbet.com

Interventional News**18**

BIBA medical Ltd,
526 Fulham Road
SW6 5NR London
United Kingdom
E-mail: Shilpa@bibamedical.com
www.interventionalnews.com

Interventional News is a specialised, quarterly newspaper which goes out to over 12,000 subscribers in Europe and North America. Published by BIBA Medical, it is an editorially independent news brand, steered by internationally renowned Editors-in-Chief, Professor Andy Adam and Dr. Brian Stainken.

Interventional News contains the latest news, opinion from thought leaders in interventional radiology, summaries of cutting-edge research, expert analysis, conference coverage, information and updates on the latest products and the medical device industry. Please visit www.interventionalnews.com for regular breaking news updates and download the IN app for Apple devices from the App Store for live conference coverage. Stay in touch with the latest developments in the world of intervention – get your free subscription to the print copy of Interventional News and our fortnightly e-newsletters at www.interventionalnews.com/register

Medtronic**2**

710 Medtronic Parkway
MN 55432-5604 Minneapolis
United States of America
www.medtronic.com

As a global leader in medical technology, services and solutions, Medtronic improves the health and lives of millions of people each year. We believe our deep clinical, therapeutic and economic expertise can help address the complex challenges – such as rising costs, aging populations and the burden of chronic disease – faced by families and healthcare systems today. But no one can do it alone. That's why we're committed to partnering in new ways and developing powerful solutions that deliver better patient outcomes. Founded in 1949 as a medical repair company, we're now among the world's largest medical technology, services and solutions companies, employing more than 85,000 people worldwide, serving physicians, hospitals and patients in more than 155 countries. Join us in our commitment to take healthcare Further, Together. Learn more at www.medtronic.com

Mentice**16**

Odinsgatan 10
411 03 Gothenburg, Sweden
Phone: +46 76 86 94405
www.mentice.com

Mentice is a world leader in medical simulation, providing qualified solutions for training, education and assessment opportunities. With a focus on minimally invasive techniques and procedures, Mentice develops simulation systems for training in a safe environment within the fields of endovascular intervention and minimally invasive surgery. The advantages of training with Mentice solutions are well documented enhancing clinical performance, reducing cost, and, in the long term, improving patient safety. For more information please visit www.mentice.com



THINKRADIAL™

Transradial Intervention Educational Programs

PARTNER WITH US TO DEVELOP RADIAL DIRECTED EMBOLOTHERAPY.

ADVANTAGES OF TRANSRADIAL INTERVENTIONS¹⁻⁵

- Increased patient preference
- Shorter hospital stay
- Fewer vascular complications
- Reduced radiation exposure
- Reduced procedure time
- Cost savings

Comprehensive solutions
from stick to stitch for **your**
radial procedures

PreludeEASE™

Hydrophilic Sheath Introducer

Merit Maestro®

Microcatheter

Performa®

Exclusive radial angiographic
catheters

Embosphere®

Microspheres

True Form™

RESHAPABLE GUIDE WIRE

HepaSphere™

Drug-eluting microspheres

SwiftNINJA®

Steerable Microcatheter

PreludeSYNC™

Radial Compression Device



MERITMEDICAL



Merit.com

REFERENCES

1. Jolly, S., Yusuf, S., Cairns, J., et al. (2011). The Lancet, 377(9775): 1409-1420. doi: [http://dx.doi.org/10.1016/S0140-6736\(11\)60404-2](http://dx.doi.org/10.1016/S0140-6736(11)60404-2)
2. Feldman, D., Swaminathan, R., Kaltenbach, L., et al. (2013). doi: <http://dx.doi.org/10.1161/CIRCULATIONAHA.112.000536>
3. Romagnoli, E., Biondi-Zoccai, G., Sciahbasi, A., et al. (2012). 60(24): 2481-2489. doi: 10.1016/j.jacc.2012.06.017.
4. Amin, A. et al. 6(8): 827-834. doi: 10.1016/j.jcin.2013.04.014
5. Khayrutdinov, E., Arablinskij, A., Vorontsov, A., Moscow/RU, & Omsk/RU. (2015). Retrieved November 14, 2016, from <https://3g6fc347p04i2t7uf32fw56-wpengine.netdna-ssl.com/wp-content/uploads/2015/01/IROS-2015.pdf>

WATCH THE VIDEO



Merit Medical**14**

Amerikalaan 42
6199AE Maastricht
The Netherlands
Phone: +31 433 588 222
www.merit.com

Founded in 1987, Merit Medical Systems, Inc. is a worldwide company engaged in the development, manufacture and distribution of proprietary disposable medical devices used in interventional and diagnostic procedures, particularly in cardiology, radiology, embolic therapy and endoscopy. With a global work force and cutting-edge manufacturing facilities equipped with the most advanced technology, Merit Medical consistently delivers quality products that are backed by excellent customer service and professional expertise. We look forward to GEST 2017 and the opportunity to present our high-performance embolotherapy and delivery systems portfolios. The Embosphere® Microspheres are the most clinically studied and proven round embolic agent, backed by more than 200 clinical articles; they provide consistent and predictable results for effective embolization. They are indicated for use in haemostatic embolisation and in embolisation of arteriovenous malformations, hypervascular tumours, including uterine fibroids and meningiomas, and the prostate arteries for relief of symptoms related to Benign Prostatic Hyperplasia. The SwiftNINJA® is a straight tip catheter that articulates up to 180 degrees in opposing directions to rapidly select the most challenging vascular ostium; True Form™ is a 0.014" reshapable guide wire that can be reshaped multiple times and maintain its shape during procedures. We look forward to meeting you at our booth.

Penumbra Inc.**4**

Am Borsigturm 44

13507 Berlin

Germany

Phone: +49 30 200 5676 0

Fax: +49 30 200 5676 10

E-mail: Marketing-eu@penumbrainc.com

www.penumbrainc.com

Headquartered in Alameda, California, Penumbra, Inc. is a global interventional therapies company that designs, develops, manufactures and markets innovative medical devices. We have a broad portfolio of products that addresses challenging medical illness and significant clinical needs across two major markets: neuro and peripheral vascular. The conditions that our products address include, among others, ischaemic stroke, haemorrhagic stroke and various peripheral vascular conditions that can be treated through thrombectomy and embolisation procedures. Today, we have sales operations in North America, Europe, Australia, Asia, and South America.

Sirtex Medical Europe GmbH**7**

Joseph-Schumpeter-Allee 33

53227 Bonn

Germany

Phone: +49 228 18407 30

Fax: +49 228 18407 35

E-mail: info@sirtex-europe.com

www.sirtex.com

Sirtex Medical is actively engaged in the field of liver-directed therapies for cancer patients. The innovative technology of Sirtex, SIR-Spheres® Y-90 resin microspheres (microscopic Yttrium-90 resin beads), is used in interventional oncology to deliver Selective Internal Radiation Therapy (SIRT), also known as radioembolisation, to the liver. This treatment for inoperable liver cancer delivers high doses of radiation directly to the site of tumours whilst conserving normal liver parenchyma. SIR-Spheres® microspheres were approved in 2002 for use in the treatment of a variety of unresectable

liver tumours as well as in hepatocellular carcinoma within the European Union under a CE Mark. They are presently used at 306+ institutions in Europe and to date more than 70.000 treatments have been delivered worldwide. New HCC data with SIR-Spheres® Y-90 resin microspheres: The three largest ever RCTs (> 1.200 patients) investigating SIRT and standard-of-care systemic therapy in unresectable hepatocellular carcinoma (HCC) are enrolled. Two studies comparing SIR-Spheres® Y-90 resin microspheres with sorafenib will report by April 2017 and June 2017, respectively. A third study, involving combination treatment with both modalities compared with sorafenib alone, is expected to report in 2018. ®SIR-Spheres is a Registered Trademark of Sirtex SIR-Spheres Pty Ltd

Surefire Medical, Inc.**1**

6272 W. 91st Avenue
CO 80031 Westminster
United States of America
Phone: +1 303 426 1222
Fax: +1 303 426 1223
E-mail: info@surefiremedical.com
www.surefiremedical.com

Surefire Medical, Inc. develops, manufactures and markets targeted delivery devices for the interventional oncology markets. Surefire's core technology consists of a microcatheter with a unique expandable tip that improves tumour uptake while protecting healthy tissue. It enables physicians to target tumour with superior accuracy, control and protection. Learn more: www.surefiremedical.com.



ACCESS AND
DELIVERY SYSTEMS



ABLATION SYSTEMS



MICROSPHERES



RADIOEMBOLIZATION

AT THE
FOREFRONT OF
**INTERVENTIONAL
ONCOLOGY**
WITH YOU

PUSHING BOUNDARIES

TERUMO
INTERVENTIONAL
SYSTEMS

Terumo**11**

7-9 Rue Eugène et Armand Peugeot

92500 Rueil Malmaison

France

Phone: +33 1 47 16 09 46

Fax: +33 1 47 16 09 49

E-mail: alexandra.vassiliades@terumo-europe.com

www.terumo-europe.com

Founded in Tokyo in 1921, Terumo is a multinational company with more than 90 years' experience in developing best-in-class medical devices. Pushing boundaries is what drives us to support interventionalists to do more. Rising to the challenge of innovating for patients, Terumo brings you a complete range of interventional oncology products:

- Cutting edge access and delivery systems (Occlusafe®, Radiofocus® Guidewire GT, Progreat®, Glidecath®)
- Complete range of embolic devices (AZUR® Peripheral HydroCoil®, AZUR® CX, HydroPearl®)
- Ablation systems (TATO TM) – coming soon
- SIRT next generation (QuiremSpheres® and Q-Suite TM manufactured by Quirem Medical) - coming soon
- Drug-eluting Microspheres (LifePearl®)

Having pioneered the field of Interventional Oncology, Terumo is relentlessly seeking new ways to help you apply effective solutions and achieve better outcomes for your patients. We are committed to support our comprehensive product portfolio by a well-trained field force and a solid clinical evidence.

Toshiba Medical Systems Europe**3**

Zilverstraat 1

2718RP Zoetermeer

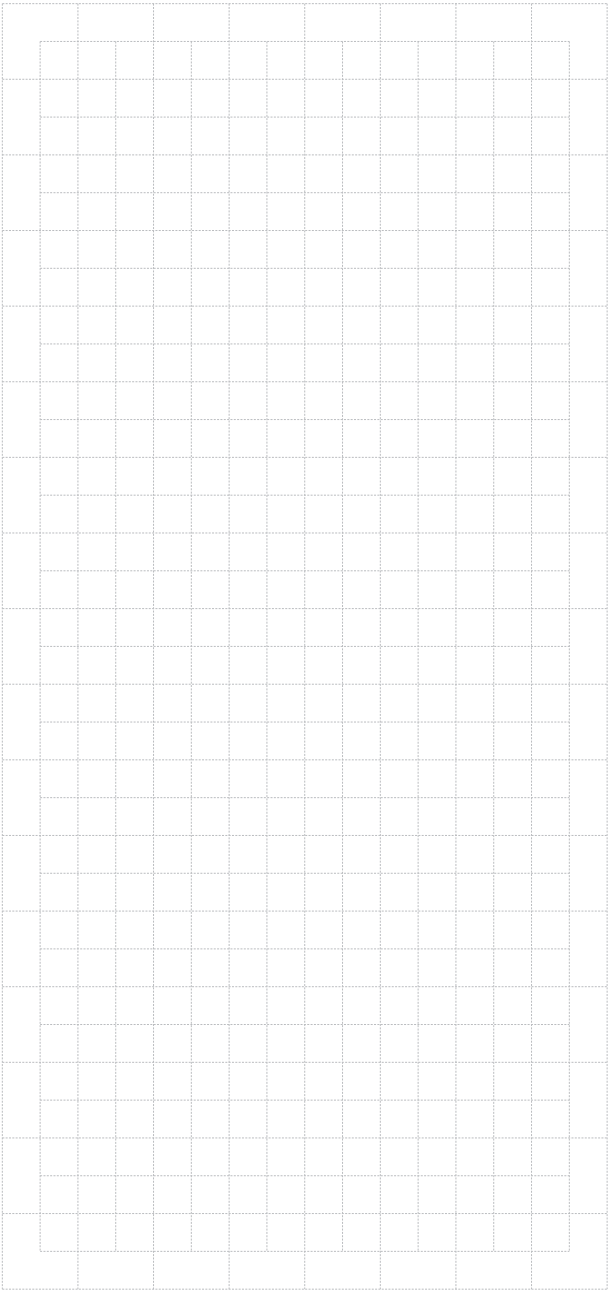
The Netherlands

Phone: +31 611 52 6311

www.toshiba-medical.eu

For over 140 years Toshiba's research and development has improved the health and welfare of people around the world. Today, Toshiba Medical Systems offers a full range of diagnostic imaging products and is a reliable service partner in more than 135 countries around the globe. Our mission is to deliver the best quality products and services, as well as the industry's best after-sales support through long-term, customer focused partnerships.

See more at: <http://www.toshiba-medical.eu/eu/why-toshiba/#sthash.5zODcRy6.dpuf>



Imprint

CIRSE Central Office

Neutorgasse 9
1010 Vienna, Austria

Phone: +43 1 904 2003

Fax: +43 1 904 2003 30

E-mail: office@esir.org

Web: www.gest2017.eu

The GEST Europe 2017 Pocket Guide

In case of any enquiries or comments,
please contact us at **office@esir.org**

© CIRSE Foundation / 2017

GraphX by L O O P . E N T E R P R I S E S media
www.loop-enterprises.com

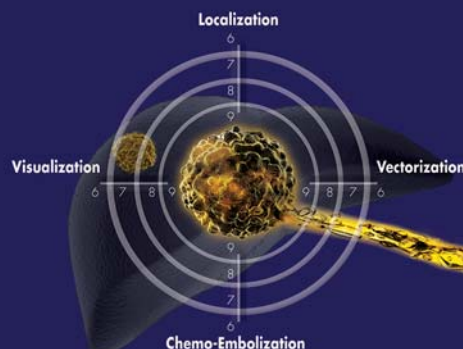




LIPIODOL® ULTRA FLUID

Ethyl ester of iodized fatty acids of poppy seed oil

Lipiodol® efficacy & safety for improved overall survival in HCC^{1,2,3,4}



Endorsed by
International HCC
Treatment Guidelines^{5,6,7,8}

Guerbet | 
Contrast for Life

LIPIODOL® ULTRA-FLUID. Composition: Ethyl esters of iodized fatty acids of poppy seed oil 10 mL, corresponding to an iodine content of 480 mg/mL. **Indications(*)**: In diagnostic radiology - Hysterosalpingography - Ascending urethrography - lymphography - Sialography - Fistulography and exploration of abscesses - Exploration of frontal sinuses - Pre and post-operative cholangiography. In interventional radiology - Visualization and localization (by selective intra-arterial use during CT) of liver lesions in adults with known or suspected hepatocellular carcinoma - Visualization, localization and vectorization during Trans-Arterial Chemo-Embolization (TACE) of hepatocellular carcinoma at intermediate stage, in adults - Selective embolization in combination with Histoacryl glue (particularly for arteriovenous malformation or aneurysms) - Selective injections of LIPIODOL® ULTRA-FLUID into the hepatic artery for diagnostic purposes where a spiral CT scan is not practical. In endocrinology - Prevention of severe cases of iodine deficiency. **Posology and method of administration (*)**: have to be adapted according to the type of examination, the territories explored, the age and weight of the patient. The volume to be administered depends on the particular requirements of the technique and the size of the patient. **Contraindications**: Hypersensitivity to LIPIODOL® ULTRA-FLUID - Confirmed hyperthyroidism - Patients with traumatic injuries, recent haemorrhage or bleeding - Hysterosalpingography during pregnancy or acute pelvic inflammation - Branchiography. In interventional radiology (Trans-Arterial Chemo-Embolization): Administration in liver areas with dilated bile ducts unless drainage has been performed. **Special warnings and special precautions for use(*)**: There is a risk of hypersensitivity regardless of the dose administered. **Immunogenicity**: Pulmonary embolism may occur immediately or after a few hours to days from inadvertent systemic vascular injection or intravascular of LIPIODOL® ULTRA-FLUID. Perform radiological monitoring during LIPIODOL® ULTRA-FLUID injection and avoid use in patients with severely impaired lung function, cardiorespiratory failure or right-sided cardiac overload. **Hypersensitivity**: all iodinated contrast agents can lead to minor or major hypersensitivity reactions, which can be life-threatening. These hypersensitivity reactions are of an allergic nature (known as anaphylactic reactions if they are serious) or a non-allergic nature. They can be immediate (occurring within 60 min) or delayed (not occurring until up to 7 days later). Anaphylactic reactions are immediate and can be fatal. They are dose-independent, can occur right from the first administration of the product, and are often unpredictable: avoid use in patients with a history of sensitivity to other iodinated contrast agents, bronchial asthma or allergic disorders because of an increased risk of a hypersensitivity reaction to LIPIODOL® ULTRA-FLUID. **Thyroid**: can cause hyperthyroidism in predisposed patients. Lymphography saturates the thyroid with iodine for several months and thyroid exploration should be performed before radiological examination. **Chemo-Embolization**: Trans-Arterial Chemo-Embolization is not recommended in patients with decompensated liver cirrhosis (Child-Pugh ≥8), advanced liver dysfunction, microscopic invasion and/or extra-hepatic spread of the tumor. Renal insufficiency must be prevented by correct rehydration before and after the procedure. Oesophageal varices must be carefully monitored. Hepatic intra-arterial treatment can progressively cause an irreversible liver insufficiency in patients with serious liver malfunction and/or undergoing dose multiple sessions. The risk of superinfection in the treated area is normally prevented by administration of antibiotics. Embolization with glue: An early polymerisation reaction may exceptionally occur between LIPIODOL® ULTRA-FLUID and certain surgical glues, or even certain batches of glue. Before using new batches of LIPIODOL® ULTRA-FLUID or surgical glue, the compatibility of LIPIODOL® ULTRA-FLUID and the glue must be tested in vitro. **Interaction with other medicinal products and other forms of interaction (*)**: Mefenamic acid, beta blockers, vasoactive substances, angiotensin-converting enzyme inhibitors, angiotensin-receptor antagonists, Diuretics, Interleukin II. **Fertility, pregnancy and lactation (*)**: LIPIODOL® ULTRA-FLUID must only be used in pregnant women if absolutely necessary and under strict medical supervision. Breastfeeding should be discontinued if LIPIODOL® ULTRA-FLUID must be used. **Effects on ability to drive and use machines**: The effects on ability to drive and to use machines have not been investigated. **Undesirable effects(*)**: most adverse effects are dose-related and dosage should therefore be kept as low as possible: hypersensitivity, anaphylactic reaction, anaphylactoid reaction, vomiting, diarrhea, nausea, fever, pain, dyspnea, cough, hypothyroidism, hyperthyroidism, thyroiditis, pulmonary embolism, cerebral embolism, retinal vein thrombosis, lymphoedema aggravation, hepatic vein thrombosis, granuloma. **Over dose (*)**: The total dose of LIPIODOL® ULTRA-FLUID administered must not exceed 20 mL. **Pharmacodynamic properties (*)**: Pharmacotherapeutic group: X-ray contrast media, iodinated; ATC code: V08A D01. Water-insoluble iodinated contrast medium. **Presentation (*)**: 10 mL glass ampoule, box of 1 - 10 mL glass ampoule, box of 50. **Marketing authorization holder (*)**: Guerbet - BP 37400 - F-95943 Roissy Cedex - FRANCE. **Information**: tel : 33 (0) 1 45 91 50 00. **Revision**: September 2, 2015.

Materiale depositato presso AIFA in data XX/YY/2017. Per i paesi in cui il medicinale è autorizzato il materiale viene distribuito uniformemente all'RCF. Il medicinale Lipiodol ultra fluido non è registrato in Italia.

Indications and dosage may vary country to country.

Countries in which CECE indication is registered: France, Japan, South Korea, Austria, Peru, Turkey, Hungary, Czech Republic, Mongolia, Argentina, The Netherlands, Vietnam, Thailand & Mexico.

For complete information please refer to country's local SPC.

For a copy of the SPC, please contact a member of Guerbet.

1. Ikeda M, et al., Prospective Study of Transcatheter Arterial Chemoembolization for Unresectable Hepatocellular Carcinoma: An Asian Cooperative Study between Japan and Korea J. Vasc. Interv. Radiol. 2013; 24: 490-500
2. Lo C M, et al., Randomized Controlled Trial of Transarterial Lipiodol Chemoembolization for Unresectable Hepatocellular Carcinoma Hepatology 2002; 35: 1164-1171
3. Uvel JM, et al., Systematic Review of Randomized Trials for Unresectable Hepatocellular Carcinoma: Chemoembolization Improves Survival Hepatology 2003; 37: 429-442
4. Uvel JM, et al., Systematic Review of Randomized Trials for Unresectable Hepatocellular Carcinoma: Chemoembolization Improves Survival Hepatology 2003; 37: 429-442
5. EASL/ORT Clinical Practice Guidelines: Management of hepatocellular carcinoma. J. Hepatol. 2012; 56: 908-943
6. Japan Society of Hepatology, Recommendation, Chapter 5, Hepatology Research 2010; 40 (Suppl.1) 96-112
7. Bruix J, & Sherman M. AASLD Practice Guidelines: American Association for Study of the Liver Diseases, Hepatology 2011; 53: 1020-1022
8. Chinese guidelines 2011 edition, Chin. Clin. Oncol. 2012; 1:10

