

## **O-001 Oncology IR**

Swelling of the Chest Wall and Upper  
Extremity

# Medical History

- 60-year-old male patient
- Known history of lymphoma
- Presents with 1 week history of massive swelling of the chest and upper extremities
- A contrast-enhanced CT of the chest was performed.

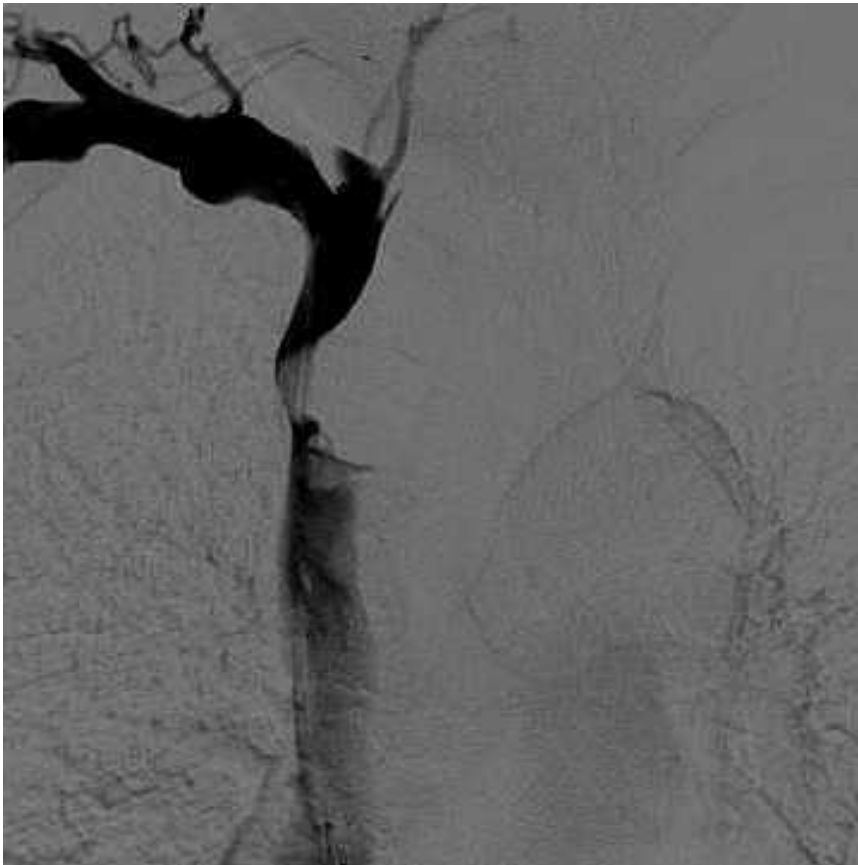
Q 1: What is your diagnosis?



Q 2: If you consider treating this patient by endovascular means, what information do you request?

A venogram was performed.

Q 3: What does this show?

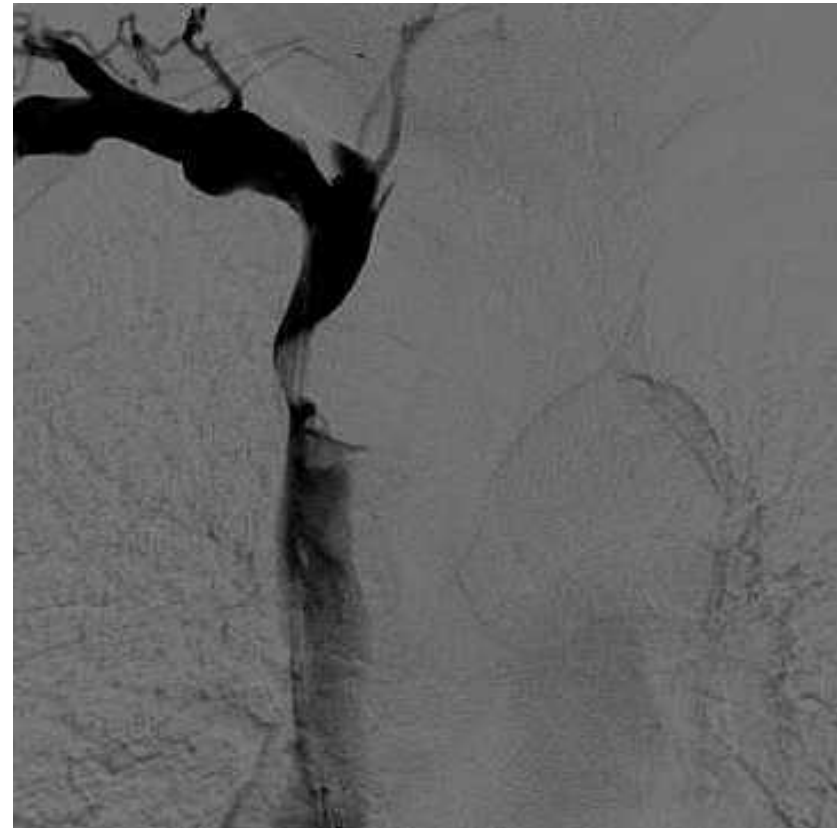


Stenosis of the brachiocephalic veins and proximal SVC by the mass was confirmed.

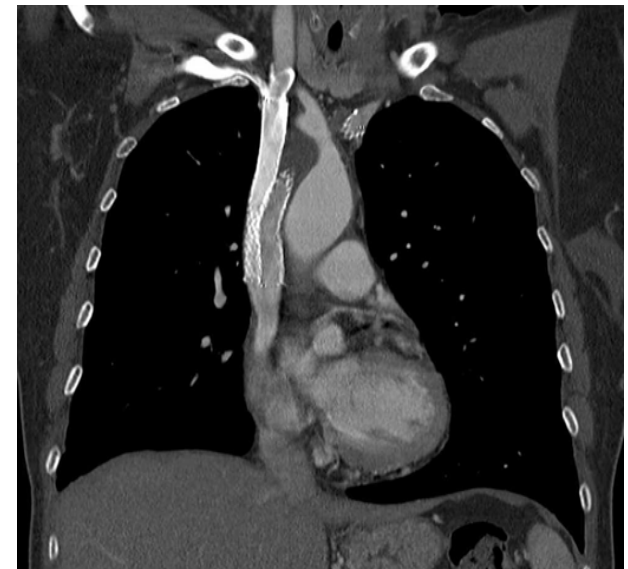
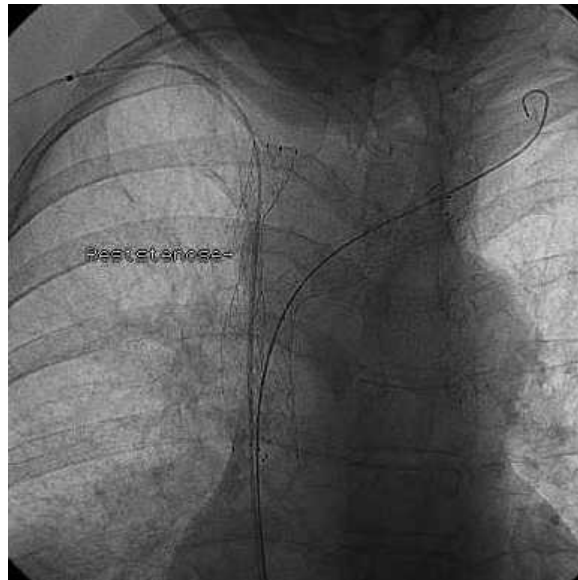
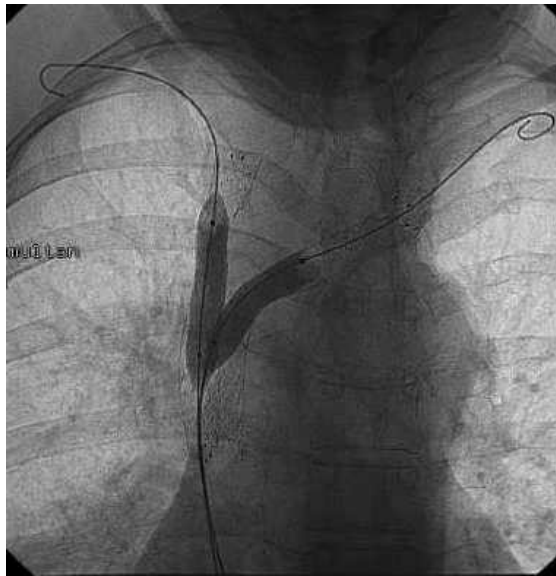
Q 4: How would you treat this?



Q 5: Describe your technique for treating this

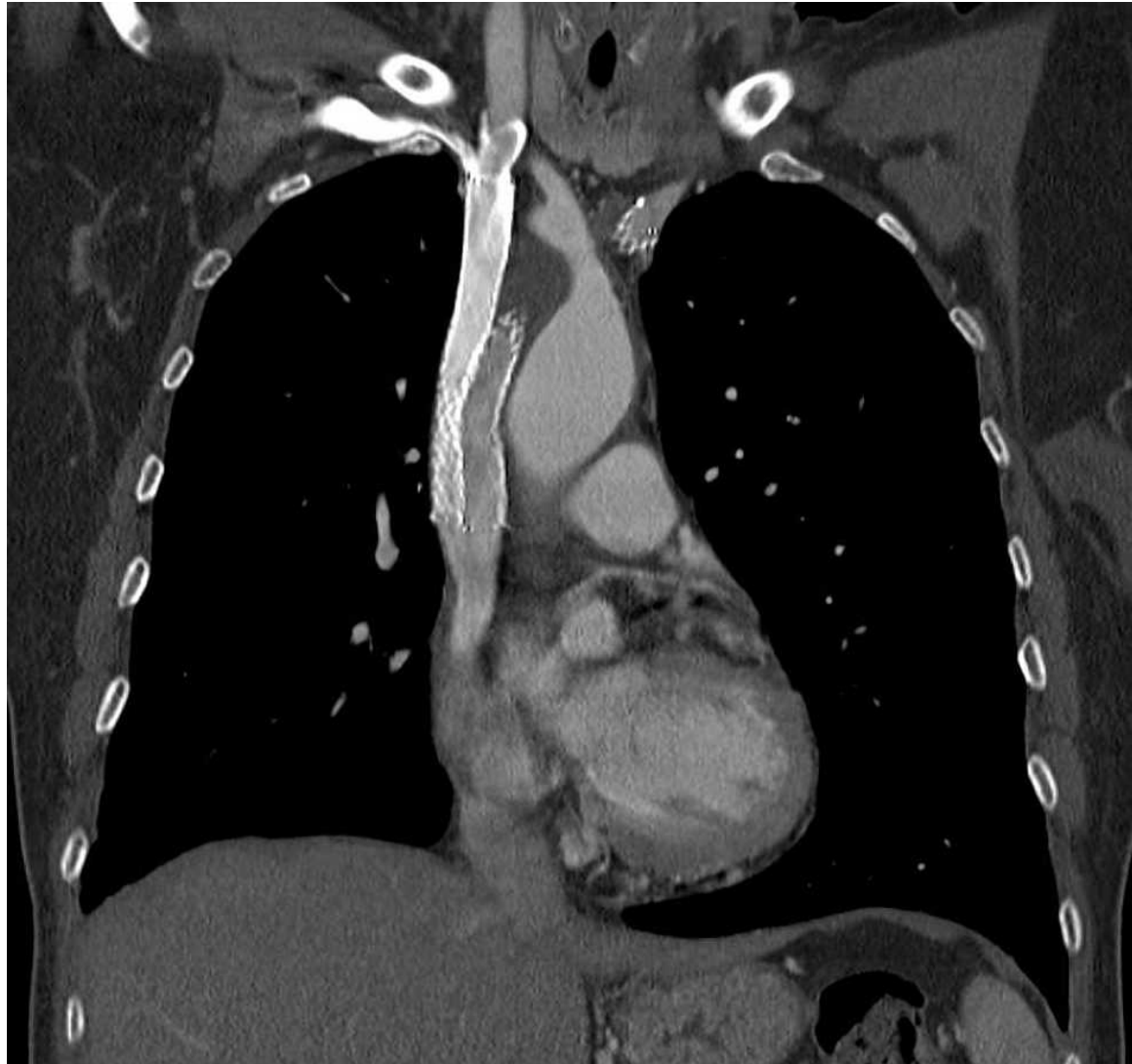


Bilateral femoral access was obtained and the lesions crossed using a 5F MPA catheter and hydrophilic guide wire. Two 14mmx80mm stents were placed in a kissing fashion over 260cm long Amplatz super stiff guide wires.





Q 6: What are the complications of SVC stenting?



You have completed this case.

Please move on to the next!